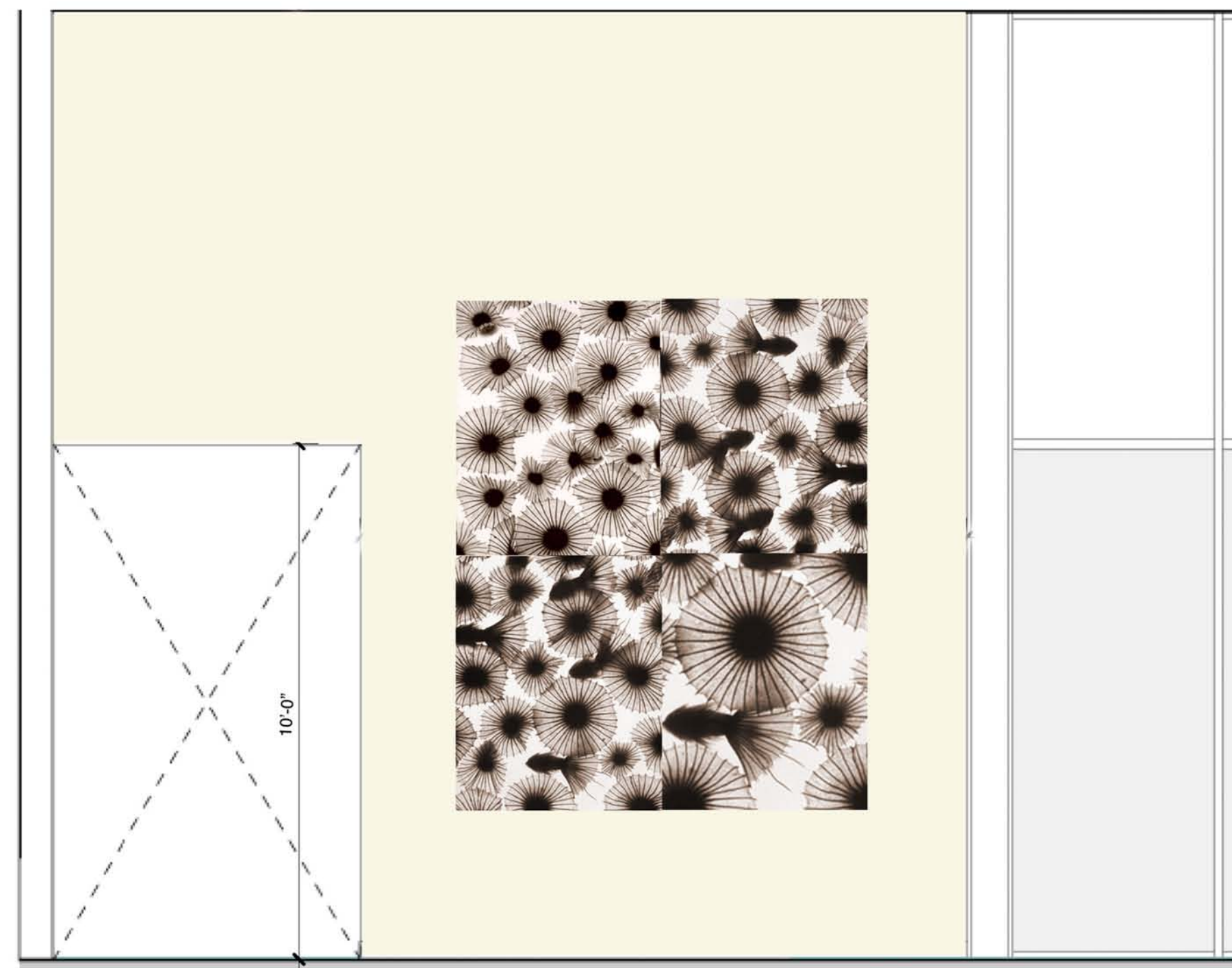




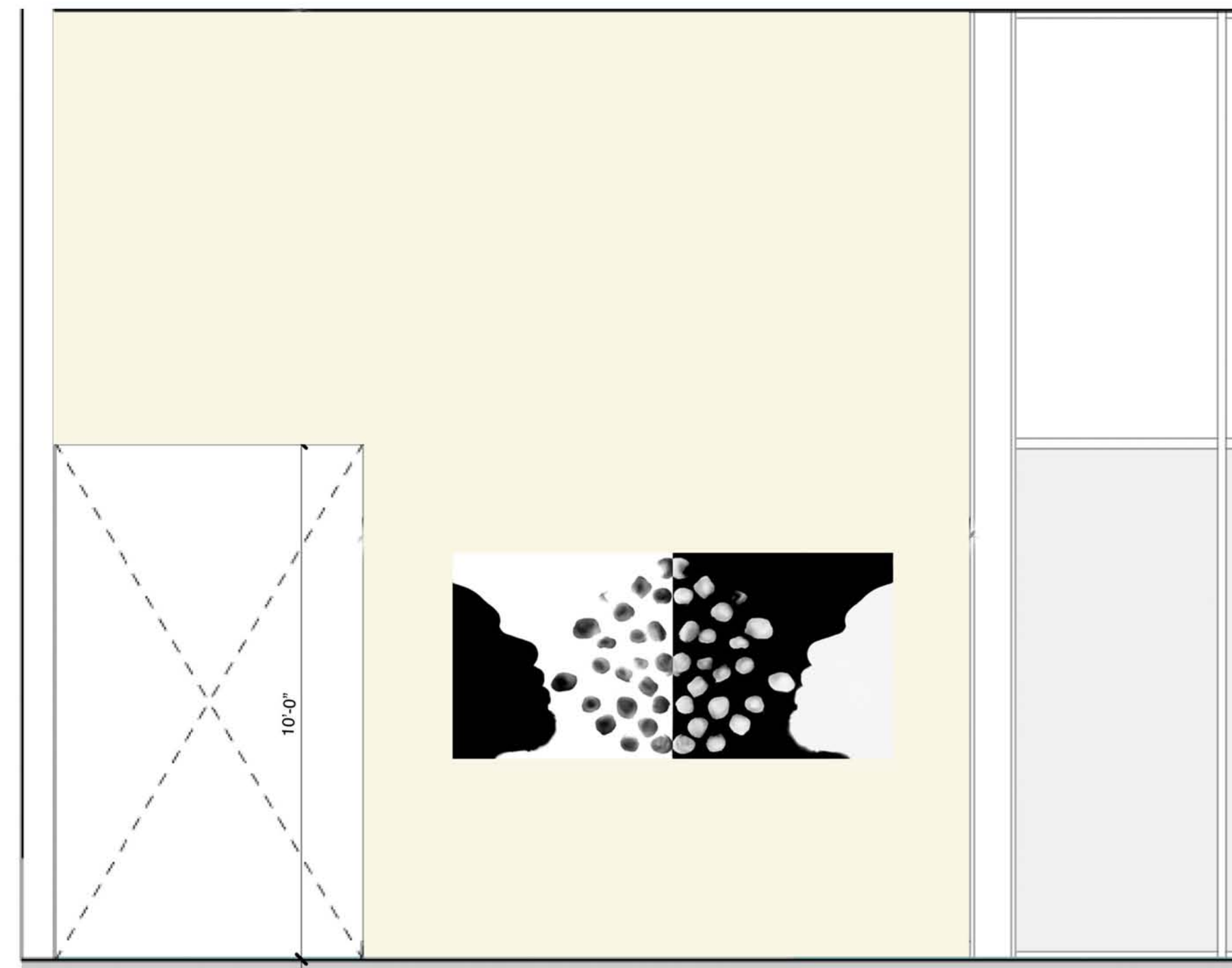
Area 1: Alternative 1 - Children's Reading Area

Scale: 3/8" = 1'-0"



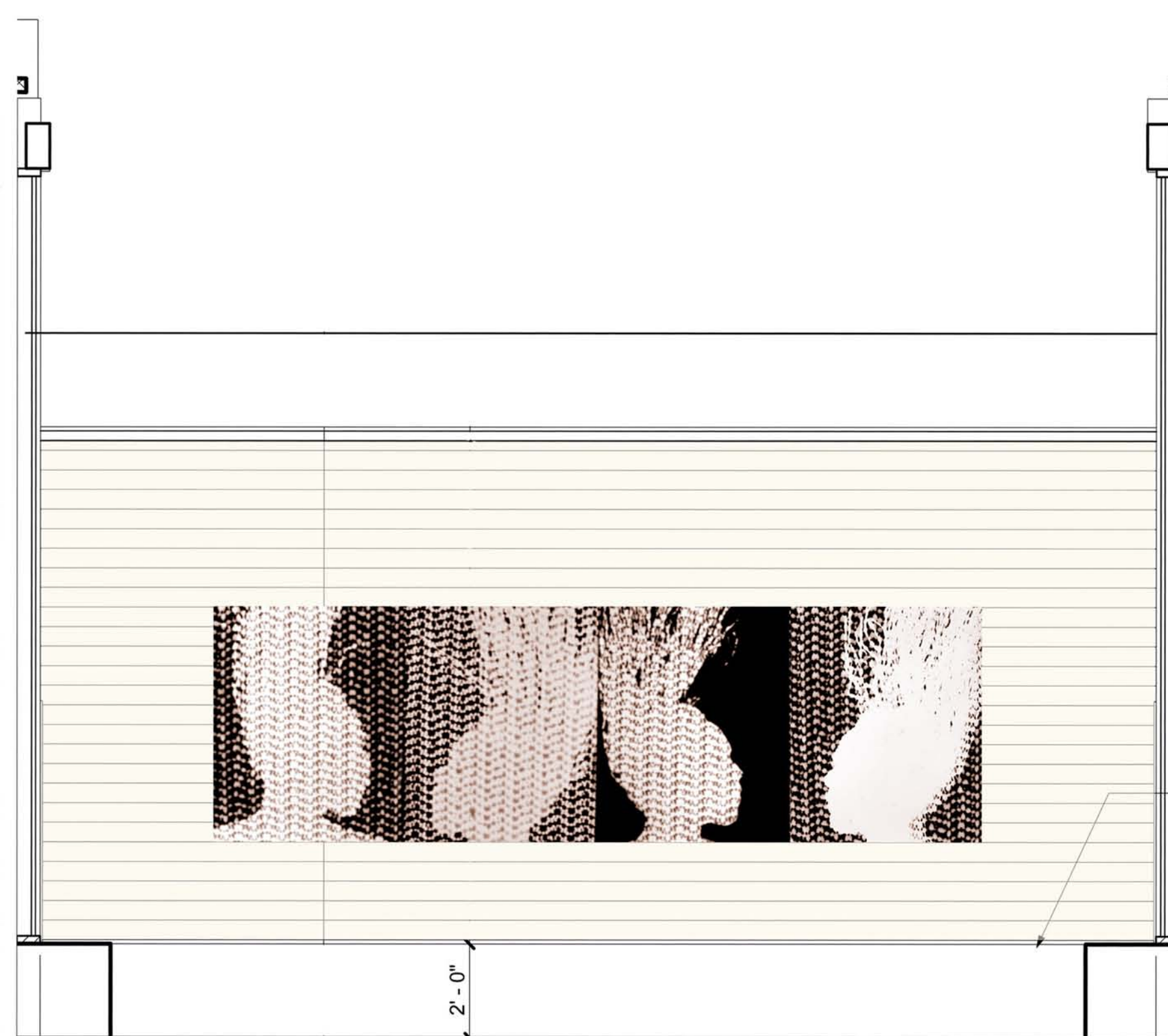
Area 1: Alternative 2 - Children's Reading Area

Scale: 3/8" = 1'-0"



Area 1: Alternative 3 - Children's Reading Area

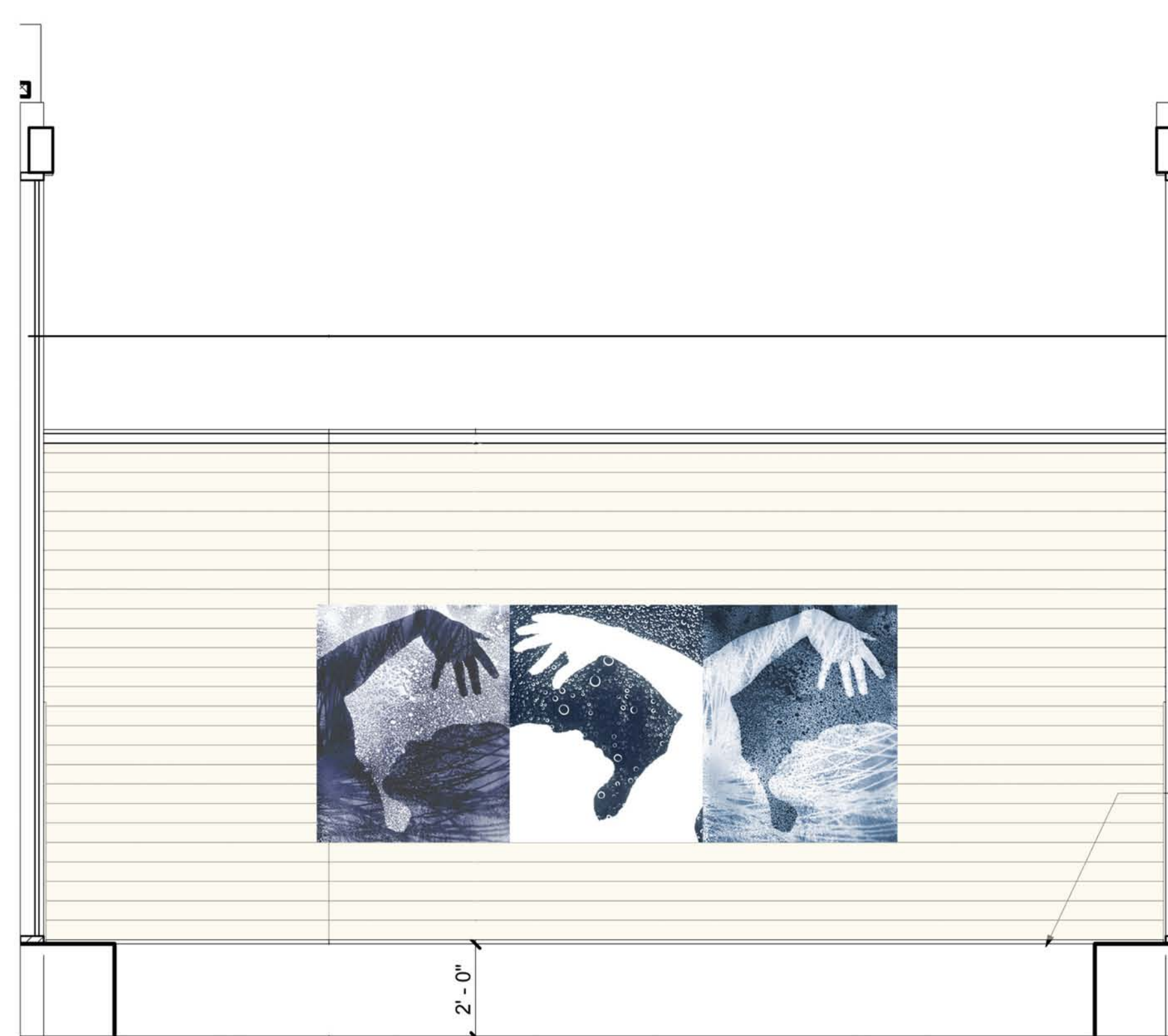
Scale: 3/8" = 1'-0"



Area 2- Alternative 1- Courtyard

Scale: 3/8" = 1'-0"

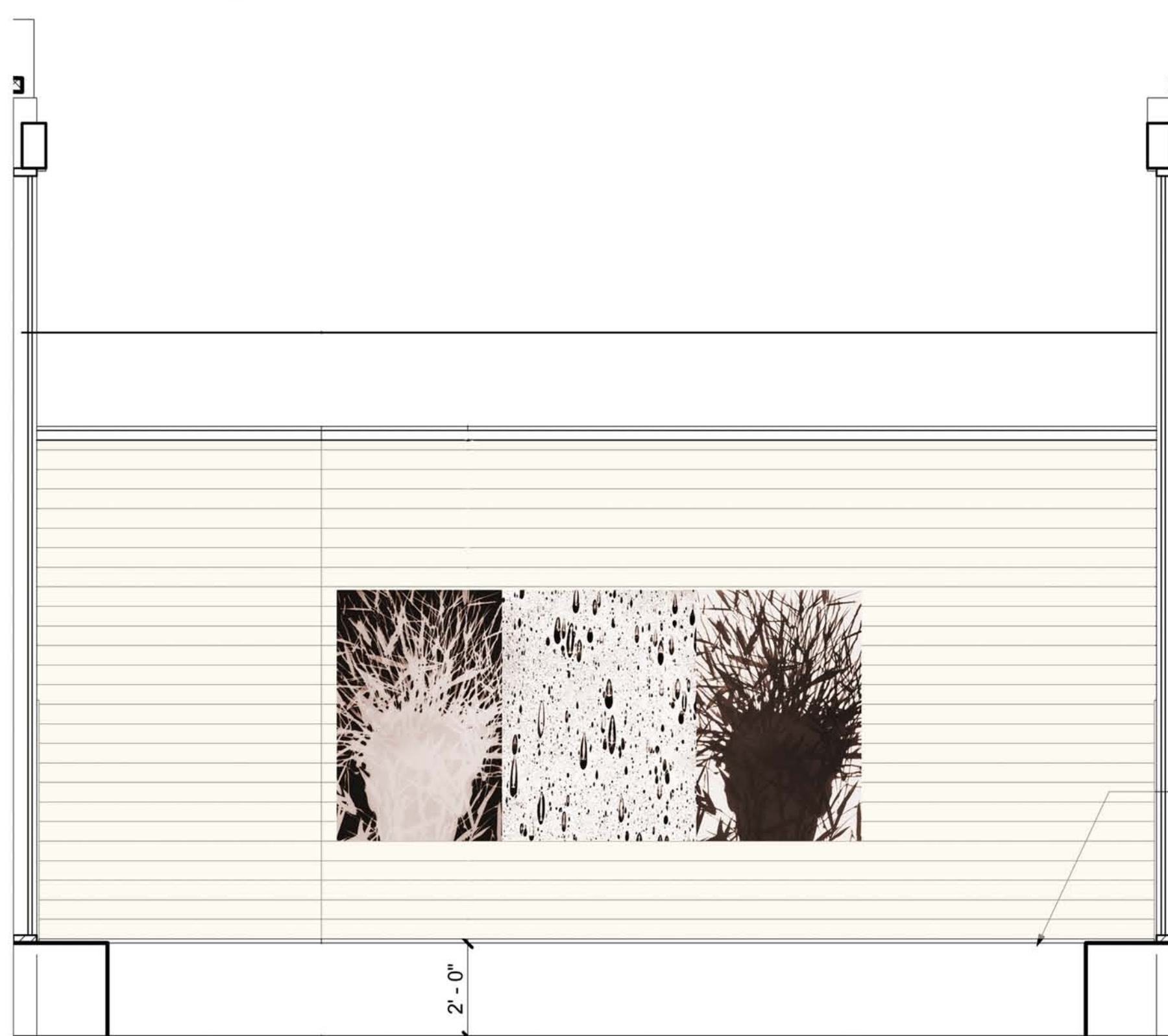
23' - 10"



Area 2- Alternative 2- Courtyard

Scale: 3/8" = 1'-0"

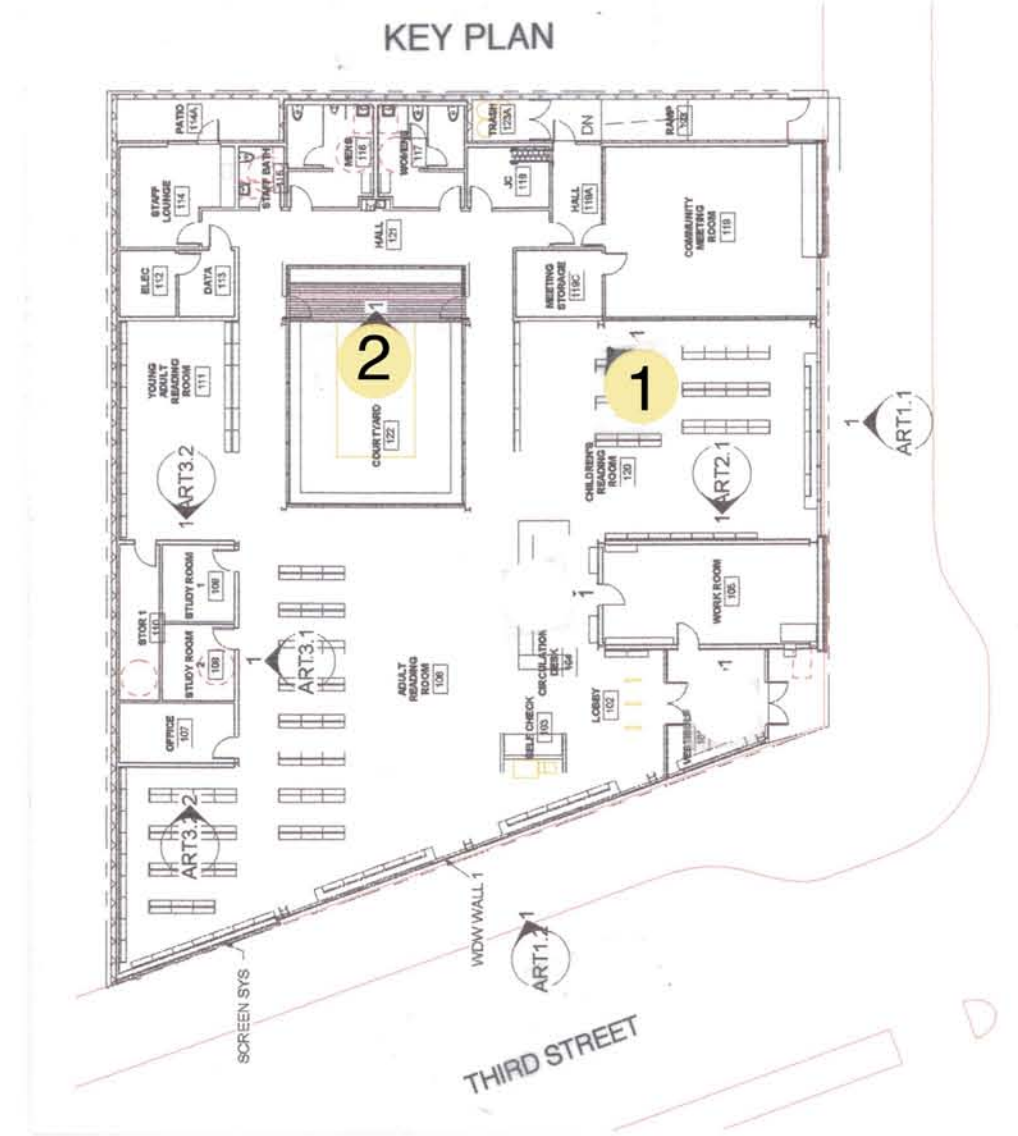
23' - 10"



Area 2- Alternative 3 - Courtyard

Scale: 3/8" = 1'-0"

23' - 10"



Description of Art Proposal

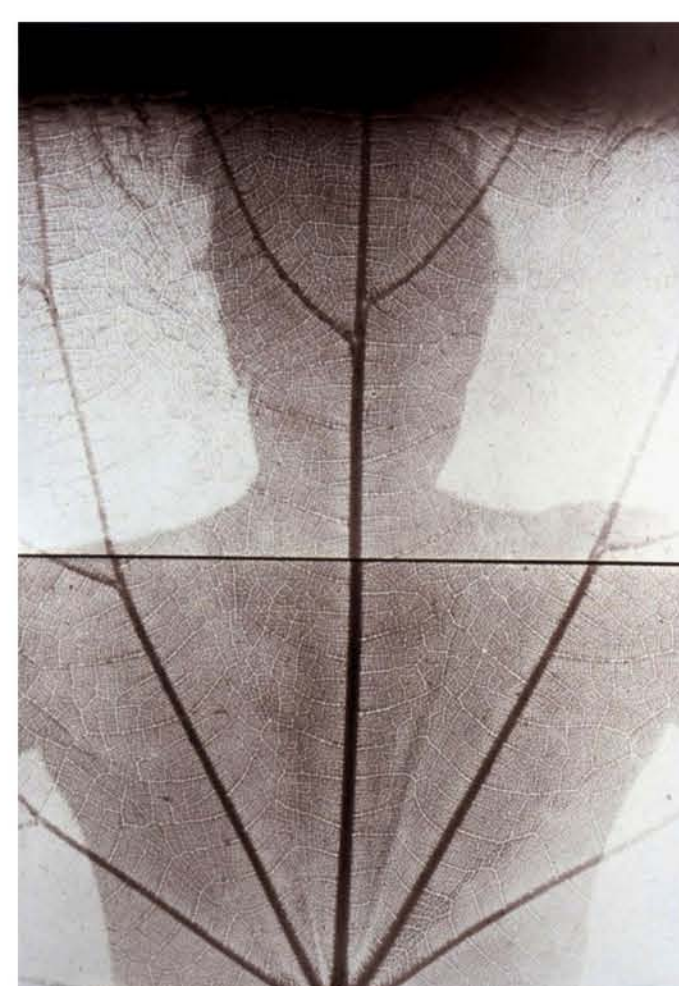
The images for this proposal speak to the spirit of life, man's interconnectedness to nature, culture and my ancestral history. As a resident of Bayview Hunter's Point for 24 years I have witnessed its changes and the evolving spirit of its people. I am inspired by these continuous changes and attempt to capture a moment of time.

The plant portraits are unique, luminous, and ephemeral capturing a fleeting moment in time. Since there is no film negative the raw beauty of plants becomes immediately accessible

I create photograms: photographs that are made without the use of a camera. This 19th century photographic process has an immediacy, rawness and truth that is not found in images created with a camera. I place the human figure, plant material and other elements on the surface of silver-based photographic paper. The paper is exposed to light emitted from an enlarger to create a shadowy silhouette image. To achieve a collage effect I layer the objects on the surface of the photographic paper and make separate exposures of each element. After the image is developed then it is sepia toned.

The photograms proposed for the courtyard is contemplative. It will be reproduced on porcelain enamel. Porcelain Enamel is a mixture of mineral content glass and inorganic pigments fused to a steel substrate at temperatures exceeding 1400 degrees Fahrenheit. This extreme temperature literally melts and fuses the glass to the steel, forming a molecular bond and creating a permanent coating. Graphics are applied with glass-based inks by a variety of methods including traditional screen-printing, stenciling and a high-resolution photographic process. Each color is applied and fired one layer at a time, creating full color, high-resolution. The enamel surface resists scratching, graffiti is easily removed, and because of its inorganic base, porcelain enamel is naturally resistant to the harmful ultraviolet component of sunlight.

The photograms proposed for the Children's Reading Area is playful and will be digitally reproduced on paper, mounted to aluminum and placed behind glass. However, if plant imagery is selected for the children's area the photograms may be original photographic prints.



Additional Imagery



**ART PROPOSAL
FOR THE
BAYVIEW BRANCH LIBRARY**

Submitted by
Ron Moultrie Saunders