

Mark Grieve and
Ilana Spector

Imagine, suspended from the central dome of the Visitacion Valley Library, a large (22' wide x 30' long x 15' high), dynamic sculpture in a shape evoking a "universe of possibilities." Made of recycled bicycle gears, rims and polished steel hoops of various sizes and visual textures, it will be a series of intersecting rhythms - a visual metaphor for the human experience - technology and the humanities - astronomy as well as biology - individual and collective - a work communicating to all walks of life, all ages, relevant for years to come.

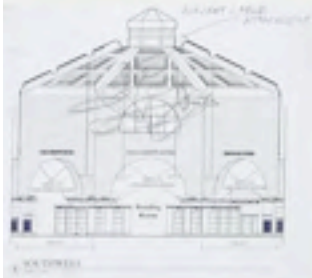
Mark Grieve & Ilana Spector



Art Proposal for the Visitation Valley Branch Library

Imagine, suspended from the central dome of the Visitation Valley Library, a large (22' wide x 30' long x 15' high), dynamic sculpture in a shape evoking a "universe of possibilities." Made of recycled bicycle gears, rims and polished steel hoops of various sizes and visual textures, it will be a series of intersecting rhythms - a visual metaphor for the human experience - technology and the humanities - astronomy as well as biology - individual and collective - a work communicating to all walks of life, all ages, relevant for years to come.

Mark Grieve & Ilana Spector



Fran Martin and
Jim Growden

Proposal

In order to present a unified aesthetic statement for the exterior and interior of the Visitacion Valley Branch Library, we propose steel gates and finials on the fencing outside the building and, *Liber*, a floor sculpture in the center of the domed space. Thus, the inside and outside would be connected conceptually and visually with similar design elements. Inside the building, the sculpture would create a symbolic link to the *oculis* above.

Interior Sculpture, *Liber*

It is proposed that the sculpture, *Liber*, be placed directly beneath the *oculis*. The sculpture, shown at 15.5 feet tall, would have a visible 5.5 feet tall concrete base seamlessly connected to a footing beneath the floor similar to those holding up the main load bearing pillars for the building. The base at floor level would have a marble baseboard and flooring surround. The base itself above the baseboard would be faced with diamond shaped marble pieces. The bronze nameplate would include latitude, longitude and the north, south, east, and west compass points.

Two bronze or steel bar pieces would spiral upward from the top of the base 8 feet towards the *oculis*. The metal spiral would fan out like arms or a plant opening to the sky, ascending towards the light of the *oculis* to a total sculpture height of 15.5 feet. Alabaster would be incorporated into the upper structure, visually connecting to the suspended alabaster lighting fixtures.

Exterior Gates and Fence Treatment

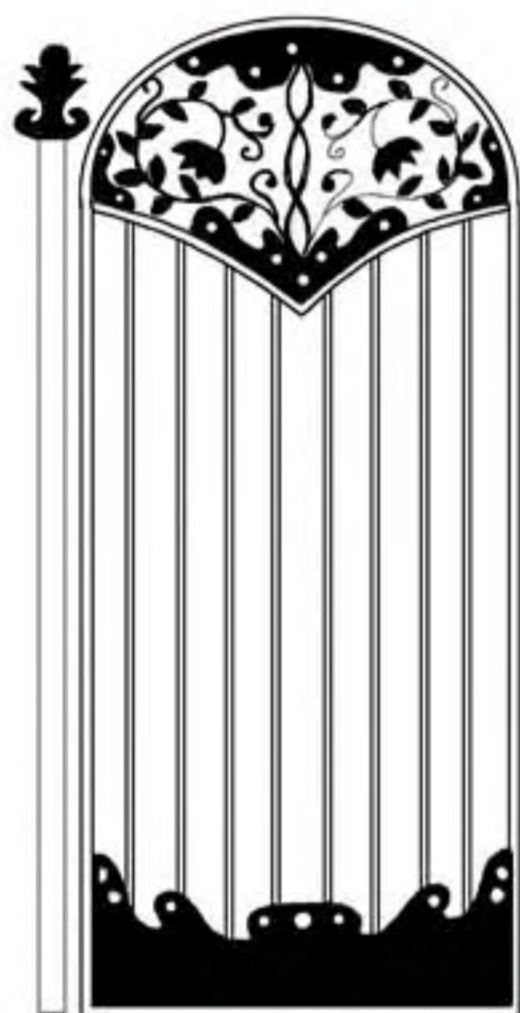
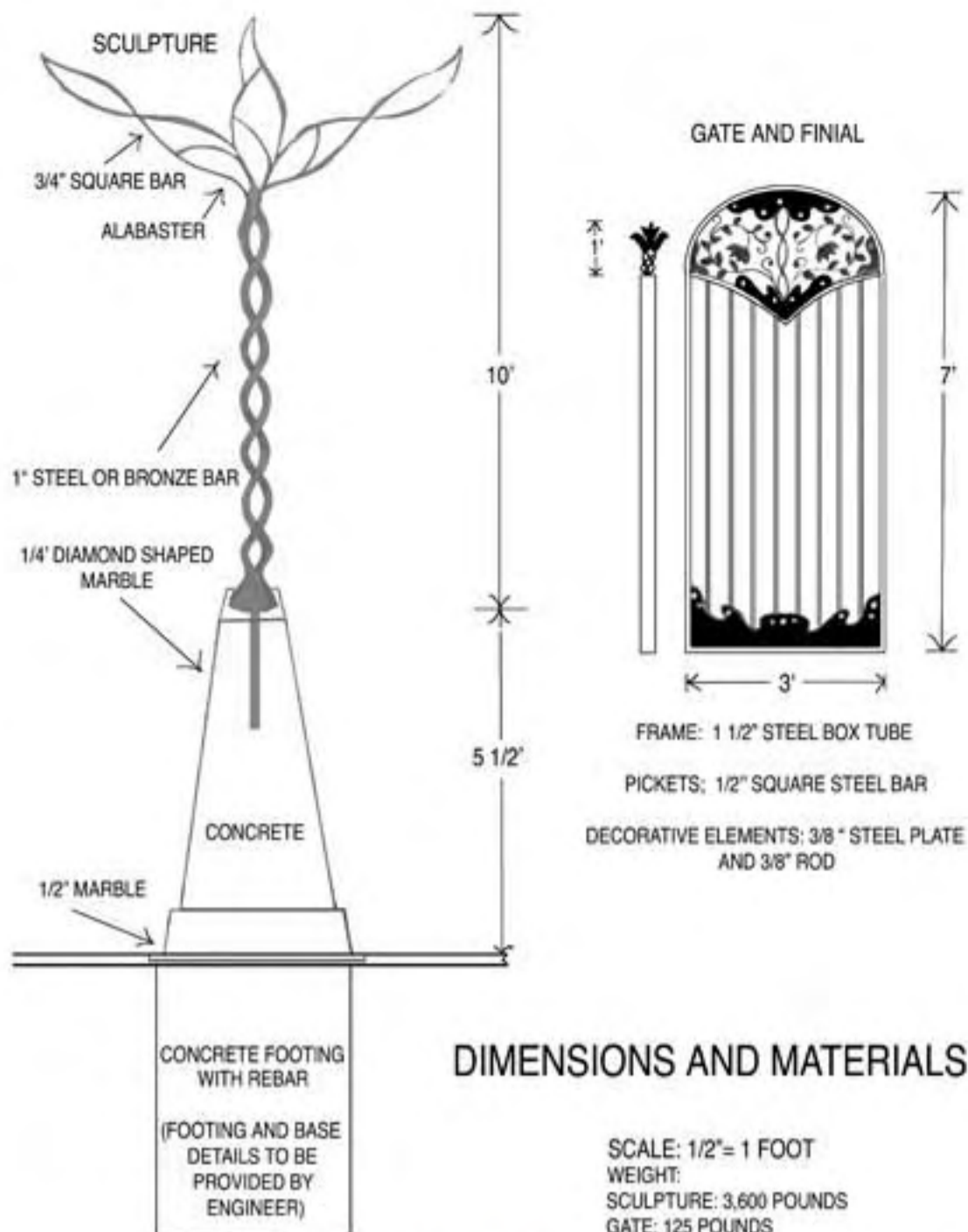
The two gates and the fence post finials would be made of plate and bar steel welded, galvanized and then painted black. The gates would reflect similar design elements evoked by the interior sculpture, particularly the spiral shape. The top of the arched ADA accessible gates would be 1 foot above the fence line with decorative elements incorporated mostly on the upper 2 feet and the bottom kick plate. The finials would relate design-wise to the gates and sculpture.

Concept

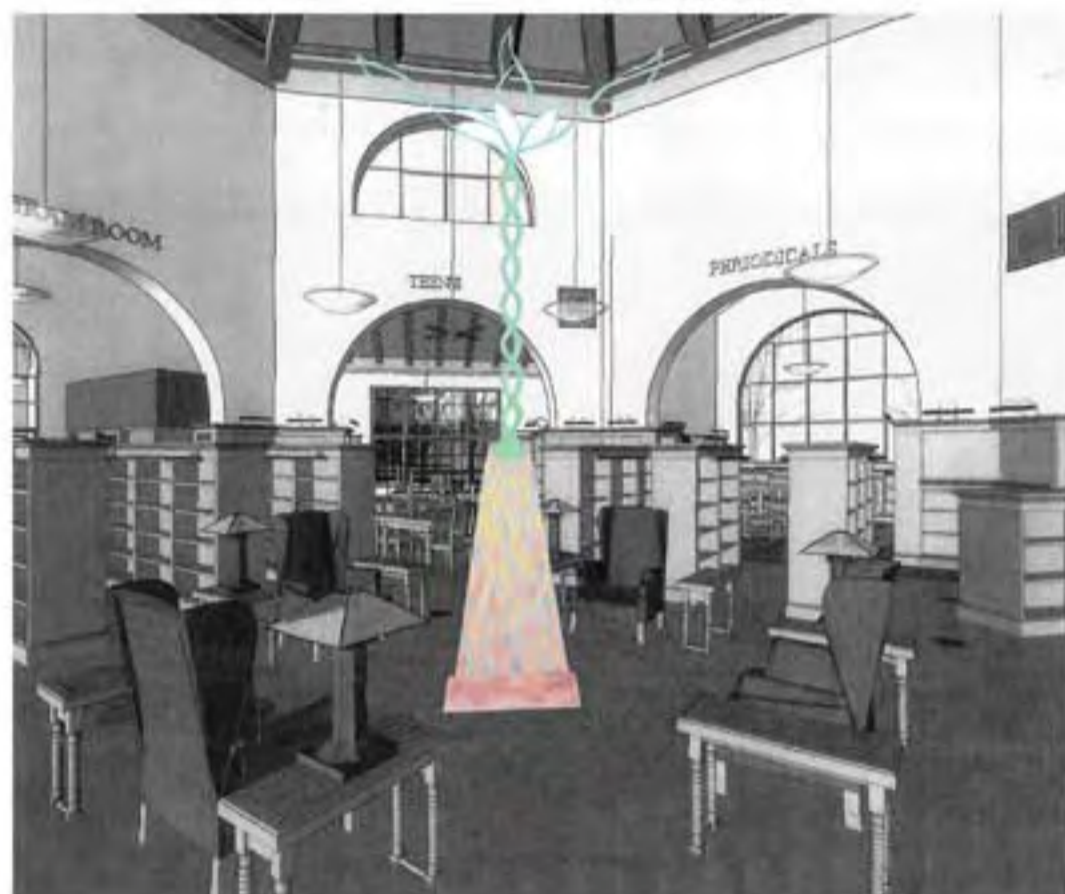
The word library is derived from the Latin word, *liber*, which is the thin peel found between the wood and bark of trees and was used as a writing material by ancient Romans. Interestingly, this probably refers to the cambium layer of certain plants, which is where growth cells are located. Similarly, the word for paper is derived from the ancient Egyptian word *papyrus* and book is derived from the Danish word *bog* or birch tree, both of which were used to write on.

Thus, what is logical, but not readily apparent is that the foundation for our modern library is found in the natural world of plants, as well as animals. This is common to many cultures - the Chinese made paper from silk worms, which fed on mulberry trees. There are references to the Tree of Knowledge in various cultures. The ancient *Akademos* where Plato taught was a grove of trees, hence the word academy. Thus, *Liber*, the sculpture, may be likened to a plant opening up to the sunlight emanating from the *oculis*.

Parallel to this is the concept that the pursuit of knowledge will bring enlightenment, which may be likened to coming out of the darkness of ignorance to the light of knowledge, both of oneself and the world (Plato's *Allegory of the Cave*). So, the interior sculpture is placed beneath the light filled *oculis*. The sculpture, with metal spiraling from the marble base, would ascend towards the *oculis* - metaphorically representing the ascent from ignorance towards illuminating knowledge.



Proposed Finial and Gate



Proposal

In order to present a unified aesthetic statement for the exterior and interior of the Visitation Valley Branch Library, we propose steel gates and finials on the fencing outside the building and, *Liber*, a floor sculpture in the center of the domed space. Thus, the inside and outside would be connected conceptually and visually with similar design elements. Inside the building, the sculpture would create a symbolic link to the *oculus* above.

Interior Sculpture, *Liber*

It is proposed that the sculpture, *Liber*, be placed directly beneath the *oculus*. The sculpture, shown at 15.5 feet tall, would have a visible 5.5 feet tall concrete base seamlessly connected to a footing beneath the floor similar to those holding up the main load bearing pillars for the building. The base at floor level would have a marble baseboard and flooring surround. The base itself above the baseboard would be faced with diamond shaped marble pieces. The bronze nameplate would include latitude, longitude and the north, south, east, and west compass points.

Two bronze or steel bar pieces would spiral upward from the top of the base 8 feet towards the *oculus*. The metal spiral would fan out like arms or a plant opening to the sky, ascending towards the light of the *oculus* to a total sculpture height of 15.5 feet. Alabaster would be incorporated into the upper structure, visually connecting to the suspended alabaster lighting fixtures.

Exterior Gates and Fence Treatment

The two gates and the fence post finials would be made of plate and bar steel welded, galvanized and then painted black. The gates would reflect similar design elements evoked by the interior sculpture, particularly the spiral shape. The top of the arched ADA accessible gates would be 1 foot above the fence line with decorative elements incorporated mostly on the upper 2 feet and the bottom kick plate. The finials would relate design-wise to the gates and sculpture.

Concept

The word library is derived from the Latin word, *liber*, which is the thin peel found between the wood and bark of trees and was used as a writing material by ancient Romans. Interestingly, this probably refers to the cambium layer of certain plants, which is where growth cells are located. Similarly, the word for paper is derived from the ancient Egyptian word *papyrus* and book is derived from the Danish word *bog* or birch tree, both of which were used to write on.

Thus, what is logical, but not readily apparent is that the foundation for our modern library is found in the natural world of plants, as well as animals. This is common to many cultures - the Chinese made paper from silk worms, which fed on mulberry trees. There are references to the Tree of Knowledge in various cultures. The ancient *Akademos* where Plato taught was a grove of trees, hence the word academy. Thus, *Liber*, the sculpture, may be likened to a plant opening up to the sunlight emanating from the *oculus*.

Parallel to this is the concept that the pursuit of knowledge will bring enlightenment, which may be likened to coming out of the darkness of ignorance to the light of knowledge, both of oneself and the world (Plato's *Allegory of the Cave*). So, the interior sculpture is placed beneath the light filled *oculus*. The sculpture, with metal spiraling from the marble base, would ascend towards the *oculus* - metaphorically representing the ascent from ignorance towards illuminating knowledge.

Johanna Poethig

CIRCULATION

OF WIND, OF KNOWLEDGE, OF CULTURE, OF LIFE

Johanna Poethig

CONCEPT:

This proposal is inspired by the landscape, history, cultures of Visitacion Valley, the architecture of the new building and the purpose of a library as a place of gathering and exchanging knowledge. “The “Valley of the Wind”, as Visitacion Valley is called, speaks to the circulation of currents in our atmosphere both locally and globally. The “Valley of the Good Neighbor” brings home the ideals of community building with the circulation of diverse people and their cultures who have come together in this neighborhood over time. For the individual the circulation of life forces within our bodies is the essence of our existence. And finally, the circulation of knowledge is what brings us together in a library, learning is shared and passed to the next generation.

The architecture of the new library encourages the flow of people throughout the space. It comes together at its center where imagination and ideas can take flight in its spacious high dome. In this proposed work of art “pages” circulate in this dome and throughout the space, floating overhead and landing on walls in undulating shapes. The varying sizes give a sense of perspective and respond to the scale of rooms and walls within the building. The placement of the artwork throughout the library ties it together visually and conceptually. This circulation of “pages” is a metaphor for the movement of knowledge through the individual learner, the communities and cultures that come together in a library.

This concept is explored further through the artwork on the pages themselves. The images in development are in keeping with the ideas of wind, knowledge, culture, life, history and the landscape. There are images of Global Wind circulation as well as the historic windmill used by early agriculture in the valley. Textiles from Samoa, Vietnam, the Philippines and African American quilting traditions bring texture and color. Scientific drawings of the circulation of blood in our bodies as well as traditional Chinese Acupuncture Charts illustrate the flow of life in our bodies. Phrases and texts are translated into different languages along with a page of Braille for those that read by touch. Images of the first inhabitants and maps locate us in this area historically and geographically. Birds fly on pages at the top of the dome and a traditional Mexican “papel picado” makes everyday a celebration. This proposal shows examples of these design ideas but there is also an invitation for input from the community during the design development phase.

COLOR PALETTE & DIMENSIONS:

The visual effect will emulate pieces of paper but each page will have its own design. The overall palette is light yet colorful and placement will respond to the interior design of the library. The 16 “pages” will range in dimensions from 2’ x 3’ in varying sizes up to 4’ x 6’.

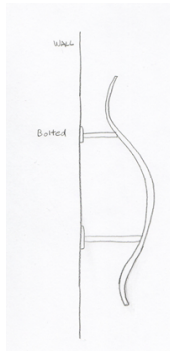
LOCATIONS:

The largest grouping of pages will float high in the dome ceiling. They will recede in size as they go towards the skylight to give a sense of perspective. In the central space, on three of the high walls above the arched entrances to the adjacent rooms larger “pages” will rest slightly off the surface to create a shadow. In the Children’s, Teen and Program rooms pages will either float on the ceiling or on the upper part of the walls. A page could even float on an exterior wall at the entrance of the library. Up to 16 - 17 pages will be installed throughout the library.

FABRICATION & INSTALLATION:

The “pages” will be fabricated out of thin sheets of metal that can be rolled and shaped to look like paper. Because of the permanence and flexibility of this material it is ideal for this design. There are several techniques for creating images on the metal pages depending on the design. Laser cutting into the metal will be perfect for the “papel picado” which itself is elaborately cut out of paper. It is also a great approach for the Braille pages, the texts in different languages and the bird images that float upward. The light from the skylight will shine through the precisely cut designs and cast shadows will add another dimension for pages mounted onto the walls. Photographic and illustrative images can be screened directly onto the metal or digitally printed vinyl, the latest in permanent image transfer technology. The metal will also be treated with permanent paints and coatings. The final applications will be determined in the design development phase.

The work will be installed with a wire suspension system to the supports in the ceiling with attachments that are welded and bolted onto the hidden face of the metal page. The metal sheets attached to the wall will be framed with supports on the back and bolted into the wall. The fabrication and installation will be subcontracted to a professional sign company.



Wall attachment

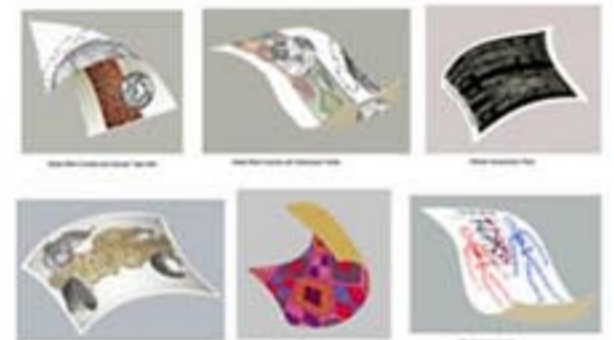


Ceiling Attachment



"CIRCULATION"
OF WIND, OF KNOWLEDGE, OF CULTURE, OF LIFE

CIRCULATION page samples



CIRCULATION

OF WIND, OF KNOWLEDGE, OF CULTURE, OF LIFE
Johanna Poethig

CONCEPT:
This proposal is inspired by the landscape, history, cultures of Visitation Valley, the architecture of the new building and the purpose of a library as a place of gathering and exchanging knowledge. "The Valley of the Wind", as Visitation Valley is called, speaks to the circulation of currents in our atmosphere both locally and globally. The "Valley of the Good Neighbor" brings home the ideals of community building with the circulation of diverse people and their cultures who have come together in this neighborhood over time. For the individual the circulation of life forces within our bodies is the essence of our existence. And finally, the circulation of knowledge is what brings us together in a library, learning is shared and passed to the next generation.

The architecture of the new library encourages the flow of people throughout the space. It comes together at its center where imagination and ideas can take flight in its spacious high dome. In this proposed work of art "pages" circulate in this dome and throughout the space, floating overhead and landing on walls in undulating shapes. The varying sizes give a sense of perspective and respond to the scale of rooms and walls within the building. The placement of the artwork throughout the library ties it together visually and conceptually. This circulation of "pages" is a metaphor for the movement of knowledge through the individual learner, the communities and cultures that come together in a library.

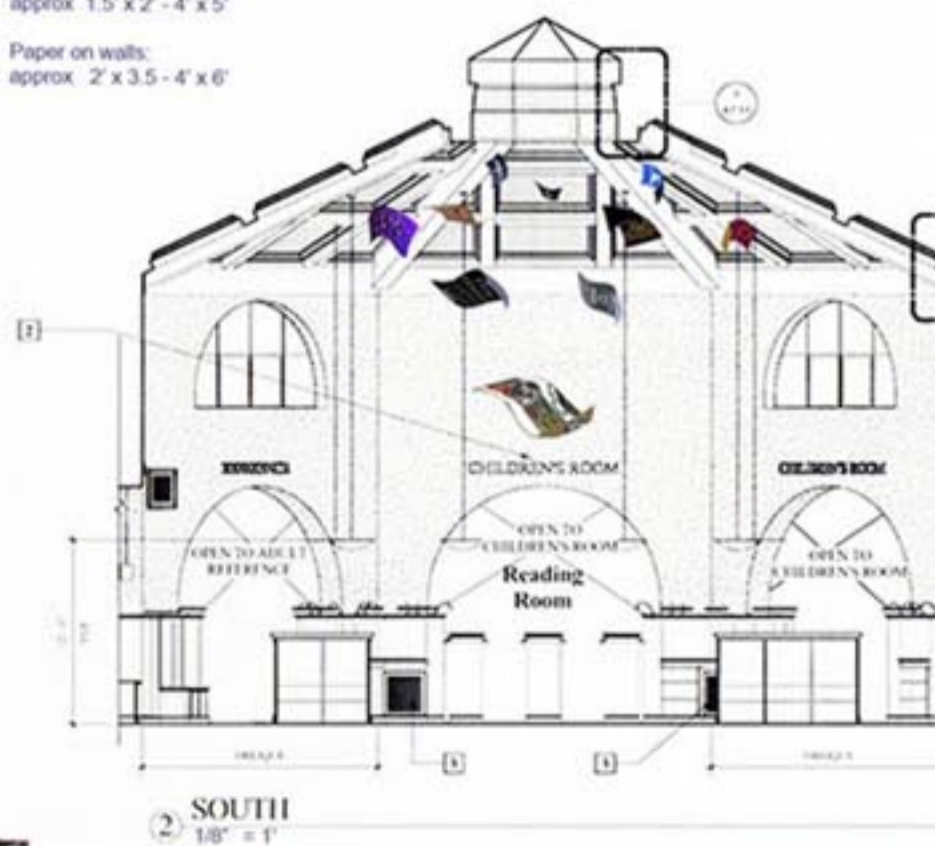
This concept is explored further through the artwork on the pages themselves. The images in development are in keeping with the ideas of wind, knowledge, culture, life, history and the landscape. There are images of Global Wind circulation as well as the historic windmill used by early agriculture in the valley. Textiles from Samoa, Vietnam, the Philippines and African American quilting traditions bring texture and color. Scientific drawings of the circulation of blood in our bodies as well as traditional Chinese Acupuncture Charts illustrate the flow of life in our bodies. Phrases and texts are translated into different languages along with a page of Braille for those that read by touch. Images of the first inhabitants and maps locate us in this area historically and geographically. Birds fly on pages at the top of the dome and a traditional Mexican "papel picado" makes everyday a celebration. This proposal shows examples of these design ideas but there is also an invitation for input from the community during the design development phase.

COLOR PALETTE & DIMENSIONS:
The visual effect will emulate pieces of paper but each page will have its own design. The overall palette is light yet colorful and placement will respond to the interior design of the library. The 16 "pages" will range in dimensions from 2' x 3' in varying sizes up to 4' x 6'.

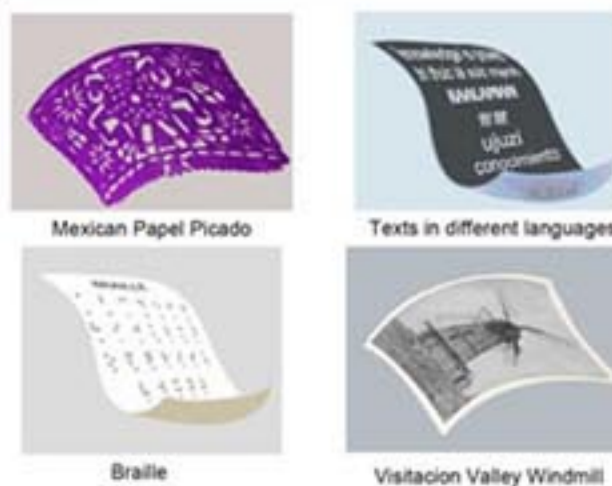
TO-SCALE RENDERING

Floating Paper:
approx 1.5' x 2' - 4' x 5'

Paper on walls:
approx 2' x 3.5' - 4' x 6'



2 SOUTH
1/8" = 1'



"CIRCULATION" Overview of placement of artwork

Children's Reading Room



Program Room

