

Marion Coleman
Art Proposal for the Bayview Branch Library

ART AREA 5.1

FIVE PIECE KUBA CLOTH REPRESENTATIONS OF VARIOUS DESIGNS FABRICATED FROM 11 GAGE 304 STAINLESS STEEL SHEET THAT IS CUT OUT TO REPRESENT APPLIQUE PATTERNS. THE STAINLESS STEEL CUTOUT PATTERNS ARE OVERLAID ON THE 16 GAGE TEMPERED COPPER SHEET AND WILL ALLOW THE PATTERNS TO SHOW THROUGH THE CUTOUTS. OVERALL DIMENSIONS WILL BE 4'L X 2'W. THE INDIVIDUAL UNITS ARE ATTACHED TO THE BACK WALL OF THE COURTYARD WITH TAMPER PROOF STAINLESS STEEL 3/8" – 16 TRUSS HEAD MACHINE BOLTS SECURED BY BOLT ANCHORS INSERTED IN BACK WALL. THEY CAN BE MOUNTED FLUSH TO THE WALL OR WITH STANDOFFS.

THE DESIGNS IN THE 11 GAGE 304 STAINLESS STEEL SHEET WILL BE LAID OUT AND CUT USING WATER JET PROCESS. THE TWO METALS BEING USED, COPPER AND STAINLESS STEEL WILL HAVE NO INTERACTION BETWEEN METALS.

KUBA CLOTH IS AN EMBROIDERED AND APPLIQUE FABRIC OF THE KUBA PEOPLE OF THE DEMOCRATIC REPUBLIC OF THE CONGO. KUBA CLOTH IS A WELL KNOWN EXAMPLE OF THE ANCIENT AFRICAN TRADITION OF RAFFIA CLOTH WEAVING.

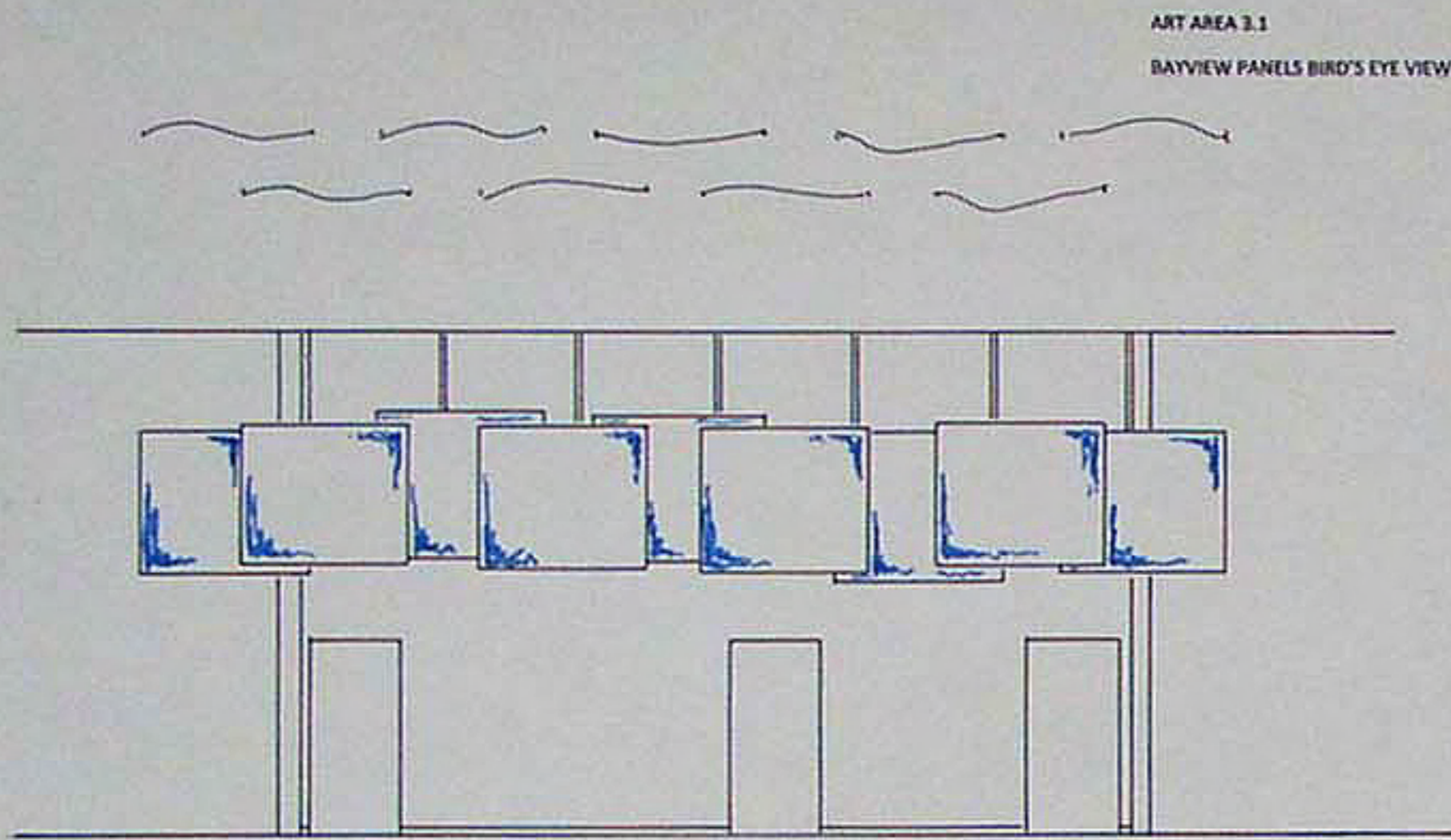
ART AREA 3.1

NINE BAYVIEW PANELS HAND PAINTED WITH ACRYLIC PAINT ON 0.8 MM POLYESTER MOSQUITO NETTING FABRIC. EACH PANEL IS 60"L X 72"W AND ATTACHED TO 1/2" ALUMINUM TUBING THAT IS SUSPENDED APPROXIMATELY 3' FROM THE CEILING ON STAINLESS STEEL FISHING LINE.

ART AREA 4.1

COMMUNITY OUTREACH COMPONENT
NON-PERMANENT ARTWORK
CHILDREN'S STORY QUILT

ARTIST RESIDENCY PROJECT WITH COMMUNITY CHILDREN CREATING SMALLER SCALE QUILT USING BLOCKS DESIGNED AND CREATED ABOUT EACH CHILD'S FAVORITE BOOK OR CHARACTER. ARTIST IN RESIDENCE WILL CONDUCT 2-4 ART SESSIONS OF APPROXIMATELY 2 HOURS EACH DEPENDING ON NUMBER OF PARTICIPANTS. MAXIMUM SIZE 84" X 84". VARIOUS BLOCK SIZES USING VARIOUS MATERIALS INCLUDING FIBER PAINTS, FABRICS, BEADS, YARNS, ASSORTED THREADS, ETC



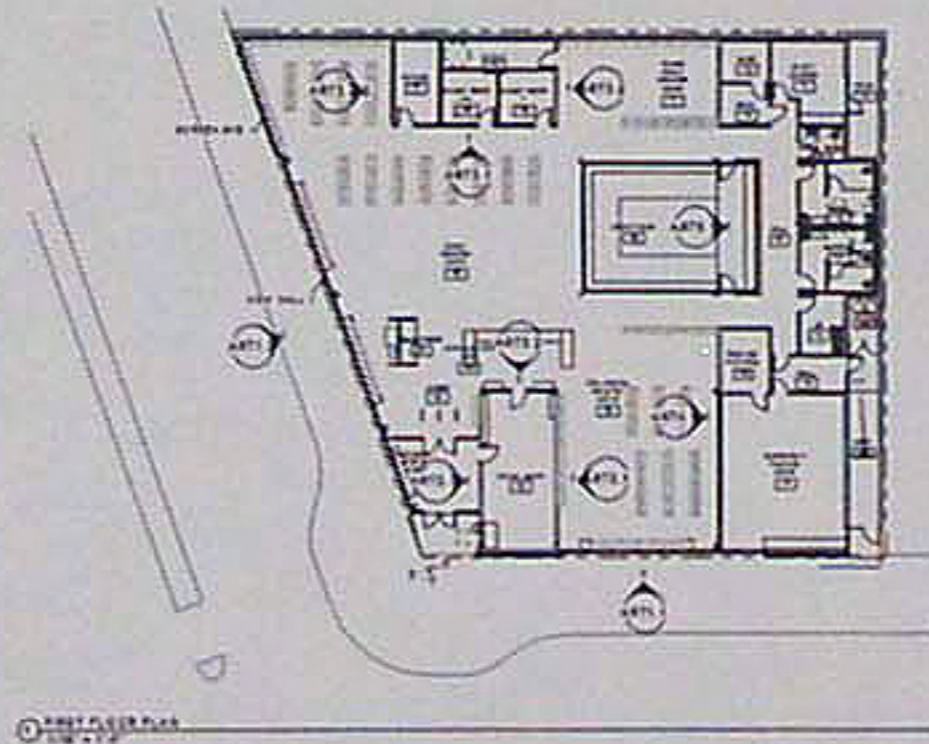
ART AREA 3.1
BAYVIEW PANELS BIRD'S EYE VIEW

ART AREA 3.1 SOUTH ELEVATION
ADULT READING ROOM
1/4" = 1'-0"

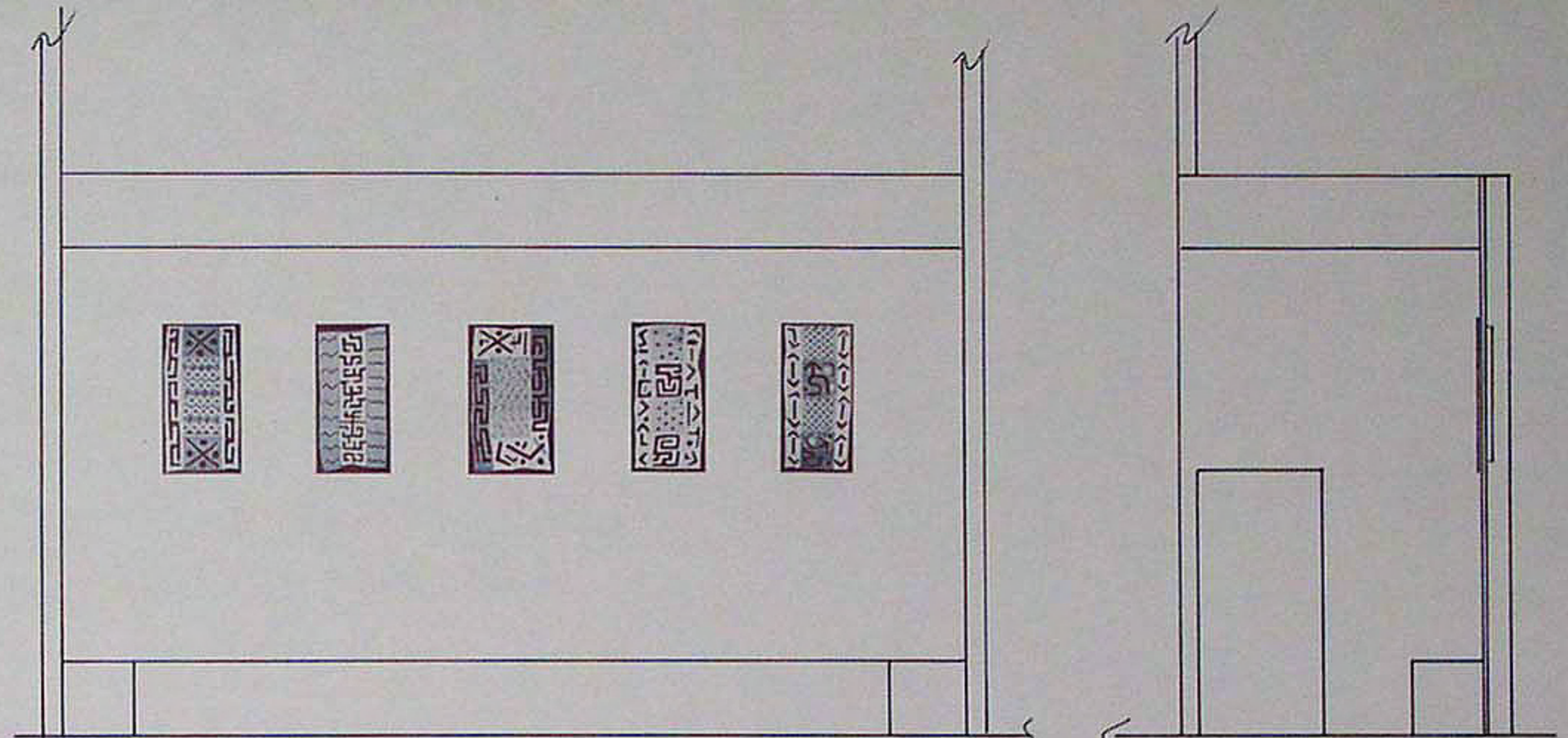
ART AREA 3.1
NINE BAYVIEW PANELS HAND PAINTED WITH ACRYLIC PAINT ON 0.8 MM POLYESTER MOSQUITO NETTING FABRIC. EACH PANEL IS 60"L X 72"W AND ATTACHED TO 1/2" ALUMINUM TUBING THAT IS SUSPENDED APPROXIMATELY 3' FROM THE CEILING ON STAINLESS STEEL FISHING LINE.



ART AREA 3.1 ADULT READING ROOM SAMPLE
PAINTED 0.8 MM POLYESTER MOSQUITO NETTING FABRIC



© 2011 AIA/ASLA



ART AREA 5.1 WEST ELEVATION
COURTYARD
1/2" = 1'-0"

ART AREA 5.1 SOUTH ELEVATION
COURTYARD
1/2" = 1'-0"

ART AREA 4.1

COMMUNITY OUTREACH COMPONENT
NON-PERMANENT ARTWORK
CHILDREN'S STORY QUILT

ARTIST RESIDENCY PROJECT WITH COMMUNITY CHILDREN CREATING SMALLER SCALE QUILT USING BLOCKS DESIGNED AND CREATED ABOUT EACH CHILD'S FAVORITE BOOK OR CHARACTER. ARTIST IN RESIDENCE WILL CONDUCT 2-4 ART SESSIONS OF APPROXIMATELY 2 HOURS EACH DEPENDING ON NUMBER OF PARTICIPANTS. MAXIMUM SIZE 84" X 84" VARYING BLOCK SIZES USING VARIOUS MATERIALS INCLUDING FIBER PAINTS, FABRICS, BEADS, YARNS, ASSORTED THREADS, ETC.



ART AREA 4.1 CHILDREN'S READING ROOM SAMPLE
5" SAMPLE BLOCK

ART AREA 5.1

FIVE PIECE KUBA CLOTH REPRESENTATIONS OF VARYING DESIGNS FABRICATED FROM 11 GAGE 304 STAINLESS STEEL SHEET THAT IS CUT OUT TO REPRESENT APPLIQUE PATTERNS. THE STAINLESS STEEL CUTOUT PATTERNS ARE OVERLAID ON THE 16 GAGE TEMPERED COPPER SHEET AND WILL ALLOW THE PATTERNS TO SHOW THROUGH THE CUTOUTS. OVERALL DIMENSIONS WILL BE 4'L X 2'W. THE INDIVIDUAL UNITS ARE ATTACHED TO THE BACK WALL OF THE COURTYARD WITH TAMPER PROOF STAINLESS STEEL 3/8" - 16 TRUSS HEAD MACHINE BOLTS SECURED BY BOLT ANCHORS INSERTED IN BACK WALL. THEY CAN BE MOUNTED FLUSH TO THE WALL OR WITH STANDOFFS.

KUBA CLOTH IS AN EMBROIDERED AND APPLIQUE FABRIC OF THE KUBA PEOPLE OF THE DEMOCRATIC REPUBLIC OF THE CONGO. KUBA CLOTH IS A WELL KNOWN EXAMPLE OF THE ANCIENT AFRICAN TRADITION OF RAFFIA CLOTH WEAVING.



ART AREA 5.1 COURTYARD SAMPLE
11 GAGE 304 STAINLESS STEEL
16 GAGE TEMPERED COPPER

KUBA CLOTH FACSIMILE

MARION COLEMAN
ART PROPOSAL FOR THE
BAYVIEW BRANCH LIBRARY