

*Cayuga Playground
Artwork Proposals*

JEFFERSON MACK

CONCEPT

This design is a celebration of the whimsical nature and organic forms found in Cayuga Park. The lyrical gates hint at the magical journey just inside this tiny park in a bustling city, where one can meditate and engage with spirit, creation, re-creation and community. Time slows to a snail's pace as you enter this gem of a park and one re-discovers a fascination with fantastic creations, both man-made and natural.

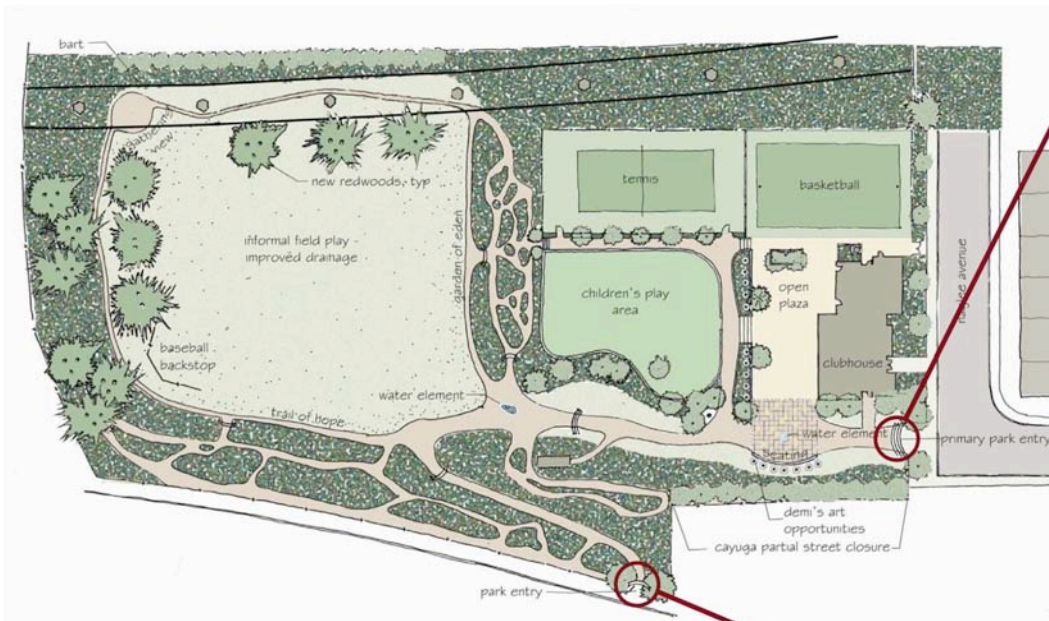
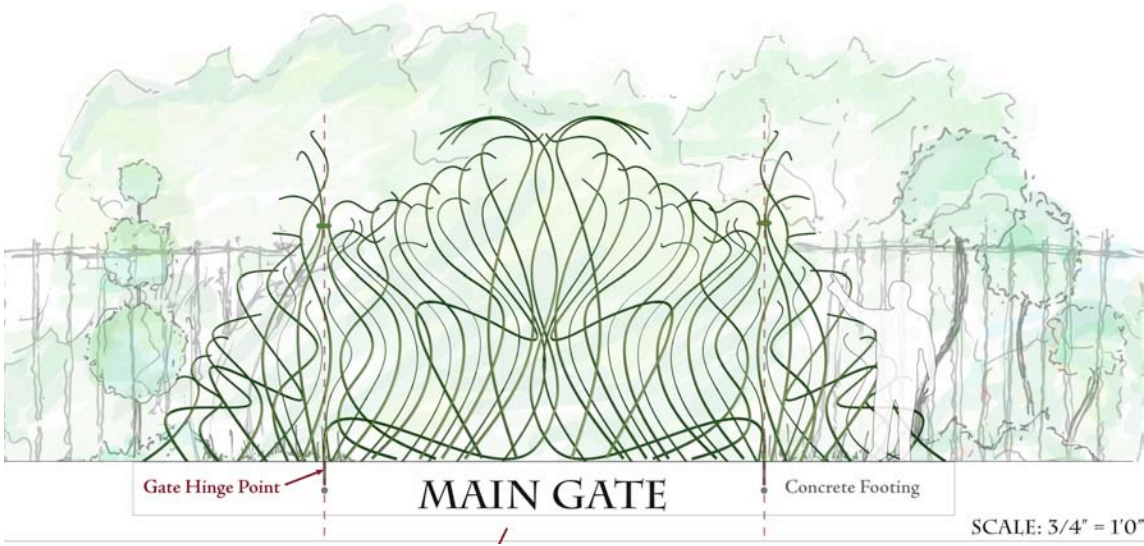
PROPOSAL

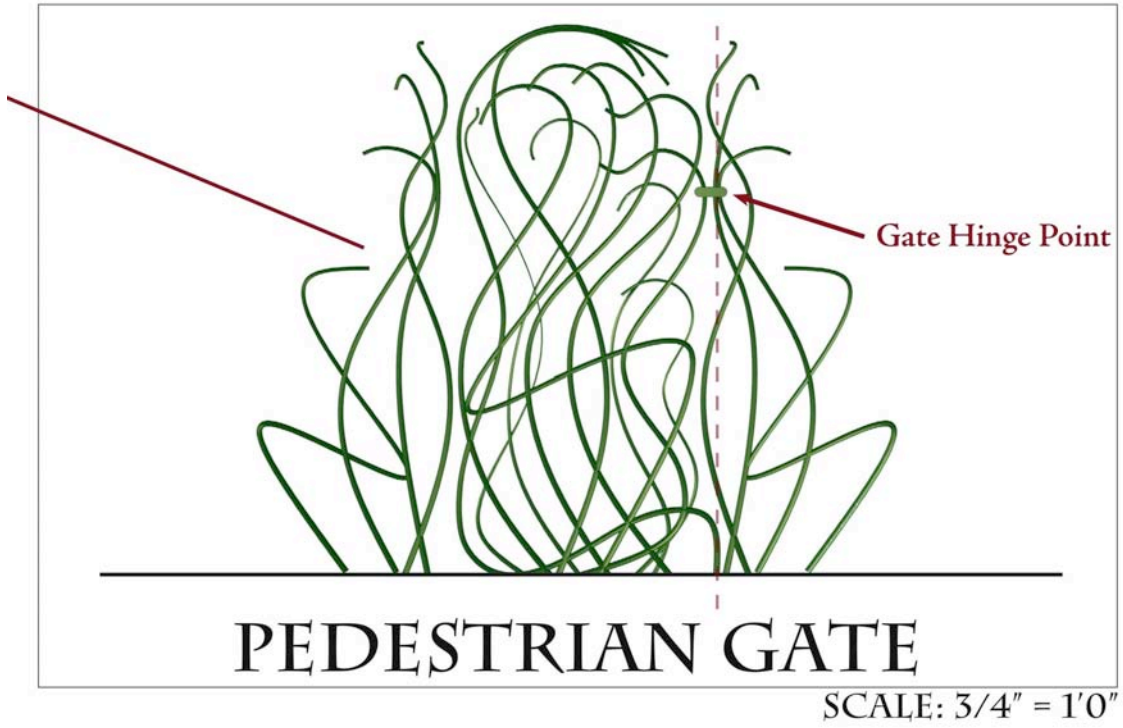
Main Entry Gate:

I propose to create one large forged steel gate for the main entry at the termination of Cayuga Street at Naglee Avenue, which is 22 feet wide by 10 feet tall. The gates will be constructed of hot-forged members of mild steel ranging in size at the base from 1.25 to 1.5 inches in diameter of solid, square bar forged into roughly octagonal/round tapers ending at .75 inch at the uppermost end. The forged tapers will resemble natural plant tendrils and forms found in Cayuga Park. The gates will then have a coat of high grade exterior paint applied in an earth tone color such as dark green.

Secondary Entrance Gate:

If additional funding becomes available, a second gate can be produced which would be located at the pedestrian side entrance to the park from Alemany Boulevard. The design for this secondary pedestrian entrance, which would be 9 feet wide by 8 feet tall, is illustrated on the proposal board.





Similar Work by Artist



Existing Gate by Artist

ERIC POWELL

Proposal Concept

My vision is to create a work that is strongly life affirming and visually compelling. The composition is largely made up of vignettes drawn from the sculptures of Demetrios Braceros. These images are familiar symbols, archetypes from folk art and mythology that resonate with any viewer young or old. The sculptures created by Demetrios have a timeless beauty that provided the inspiration for the design of this gate. These works are priceless evidence of a man who cared deeply for this place and dedicated his life to its care and beauty.

Main Entrance Gate

The gate is to be located at main entrance to the park, noted as the "primary park entry" which is highlighted in the site plan on the proposal board. The top of the gate has the name of the park CAYUGA adorned with bird heads and wings. The two posts that frame the gate have three-dimensional finials in the shape of animal heads referenced from Demetrio's work. The center of the gate features a wide cast of characters. A woman stands left of center with her hand over her heart. A man with an endearing grin is at the right. Both figures are surrounded by other familiar images with all the pieces brought together by plants and leaves that grow through and surround the composition much as the plant life in the park has embraced Demetrio's sculptures.

The main entrance gate dimensions are 12' wide, 8' to 9' feet tall and 3" deep. The gate has a rich texture and varying dimensions. It is entirely smooth to the touch and both safe and inviting for small hands. At no point can a 4" sphere fit through the gate. The construction is of forged, heat-bent, fabricated round steel tubing that is welded and finished with grinding, sanding and brushing. The surface is treated with a heat-induced patina that enhances the natural colors in the metal. Color is applied using layers of very durable translucent enamel pigment. The layers are thin and translucent washes of natural colors. This allows the earth tones of the patina to show through.

Secondary Entrance Gate

If additional funding becomes available, a second gate can be produced which would be located at the pedestrian side entrance to the park from Alemany Boulevard. The design for this secondary pedestrian entrance, which would be 4' wide, 8' to 9' tall and 3" deep, is illustrated on the proposal board and would be made of the same materials and surface treatment as the main entry gate. The design is also derived from one of Demitrio's most archetypal and timeless sculptures; a mother and child.

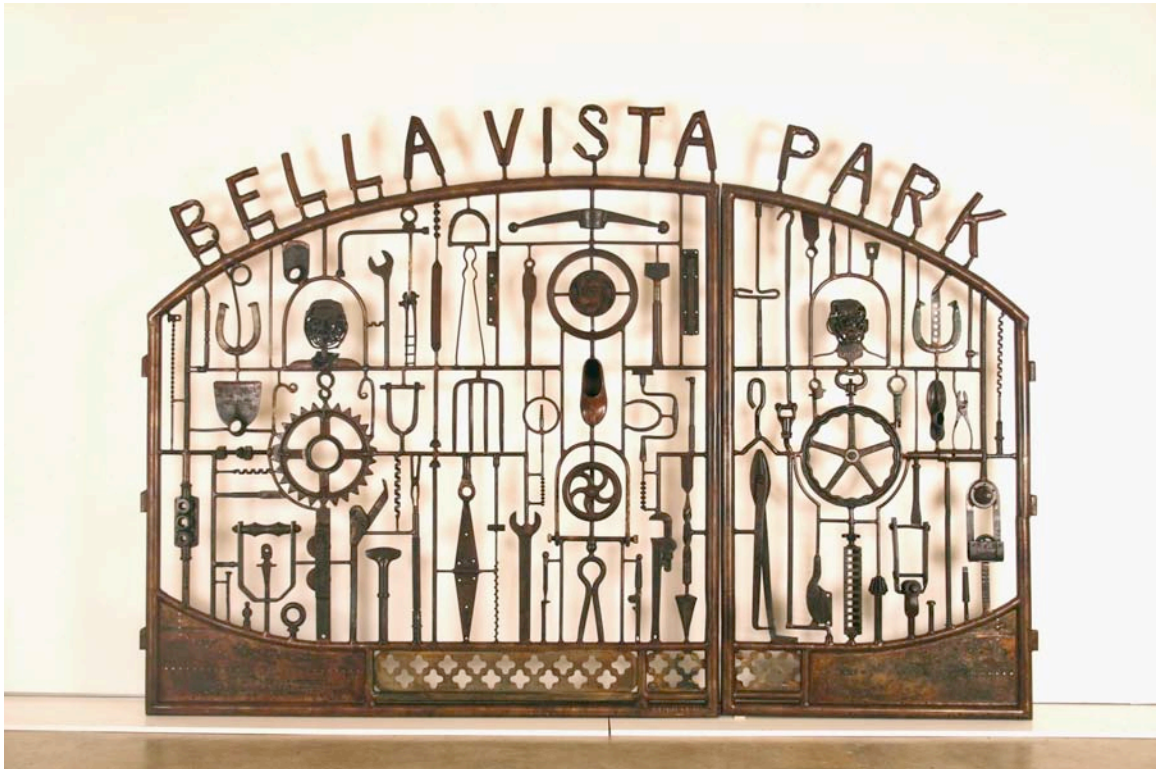
Main Entrance Gate



Secondary Entrance Gate



Previous work by the artist



Eric Powell Proposal

BRIAN TEDRICK

Concept

Demetrios Bracerros has set a precedent of whimsical harmony at Cayuga Playground with a dash of spiritual light. It is my hope to carry this spirit forward in my sculpture for the park.

Main Entry Artwork Description

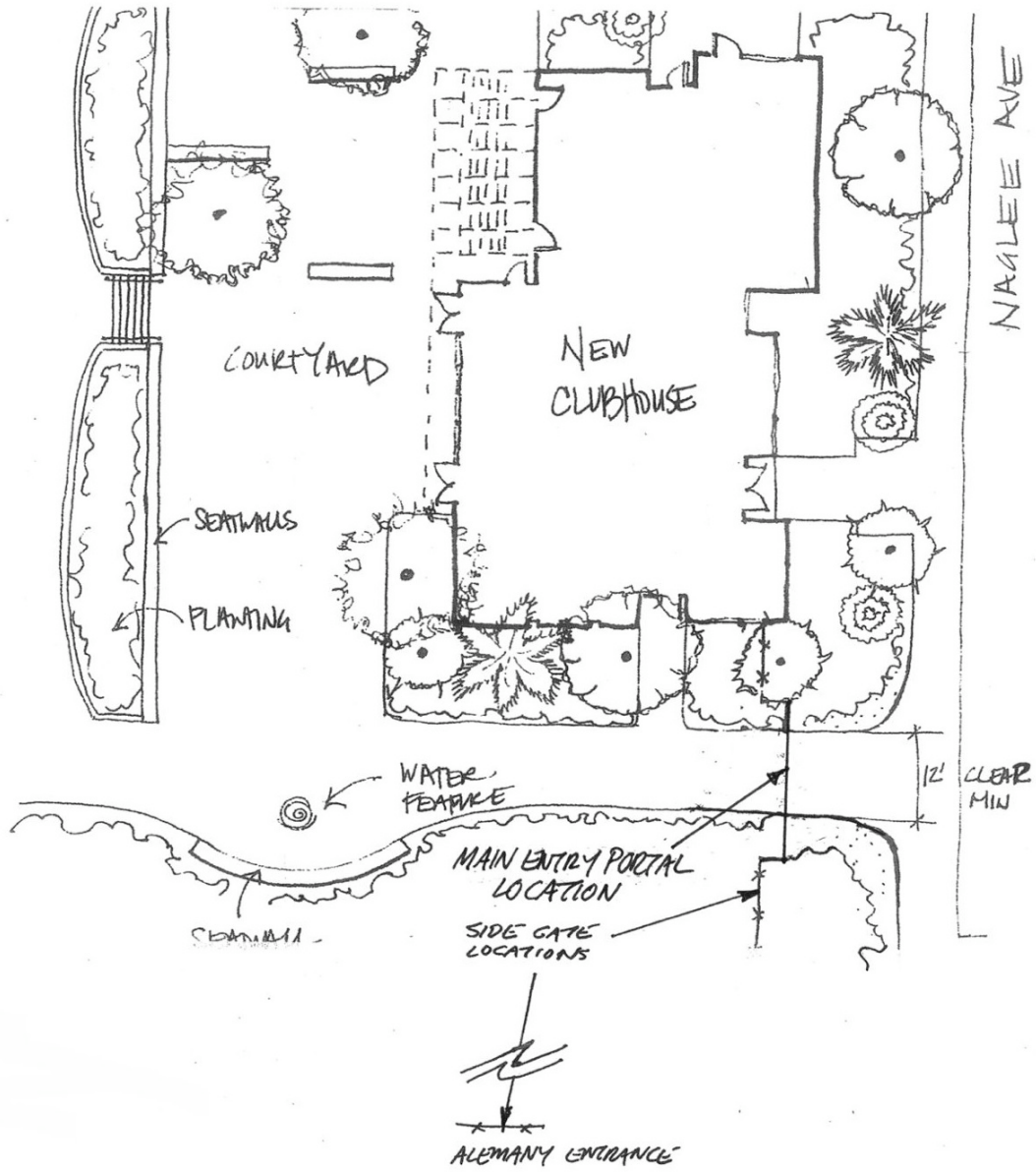
I envision building a screen-like steel portal arching over the main entry to Cayuga Playground, which frames the main entryway, and hints at what lies ahead. Flowers, bugs, birds and reptiles interweave in a halo of forged steel. Simultaneously active and still, subtle and loud this design reflects the mood of the garden as a whole. Surprises are there for those who look, along with a friendly playfulness accessible to all. The cherry blossom centerpiece refers to the indigenous cherry trees and is a symbol of regeneration and beauty.

The entire structure is made from steel that is forged to create the imagery. Joints are welded and all pieces are solid round, flat, or rectangular in shape. Overall measurements are 24' wide and 22' tall, with a cavity 12' wide by 13.5' tall in the center. Functional fencing and gates are in line with the portal but supplied by others. Attachment points can extend from the portal as needed to receive fencing or gates. Various flora and fauna are hinted at in a grillwork of forged steel bars and rods. I am open to either leaving the steel to rust and wiping it down with oil as needed or galvanizing it.

Secondary Entrance Gate

If additional funding becomes available, a second gate can be produced which would be located at the pedestrian side entrance to the park from Alemany Boulevard. Design options for this secondary entrance are illustrated on the proposal board.

SITE LOCATION



CAYUGA PARK PLAN VIEW

Bryan Tedrick

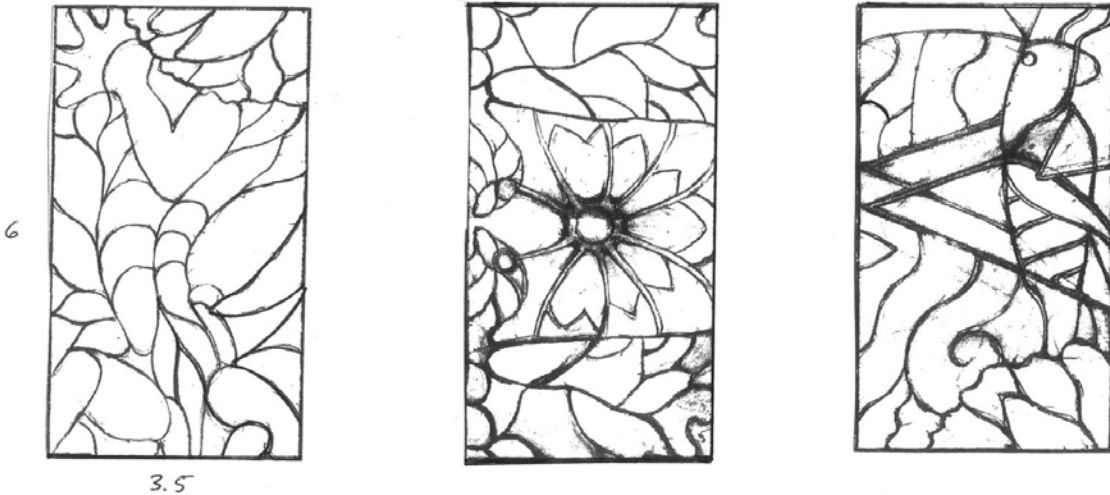
ENTRY GATE



SIDE GATE

ALTERNATE IDEAS FOR SIDE GATES. SHOWN 6' TALL AND 3.5' WIDE BUT PROPORTIONS CAN VARY SOMEWHAT. ASSUME GATE WILL BE HINGED TO POST AND LATCHED TO OPPOSING POST. INFILL WITH STEEL ROUND AS NEEDED FOR CODE.

- MOUNT ON STEEL POST WITH CONVENTIONAL HINGES
- CAN BE GALVANIZED OR ALLOWED TO RUST NATURALLY
- FORGED STEEL



CAYUGA PARK SIDE GATE IDEAS

Brian Tedrick © 2009



EXAMPLES OF
FORGED STEEL
PROJECTS SIMILAR
TO PROPOSAL



Brian Tedrick Proposal



Brian Tedrick Proposal