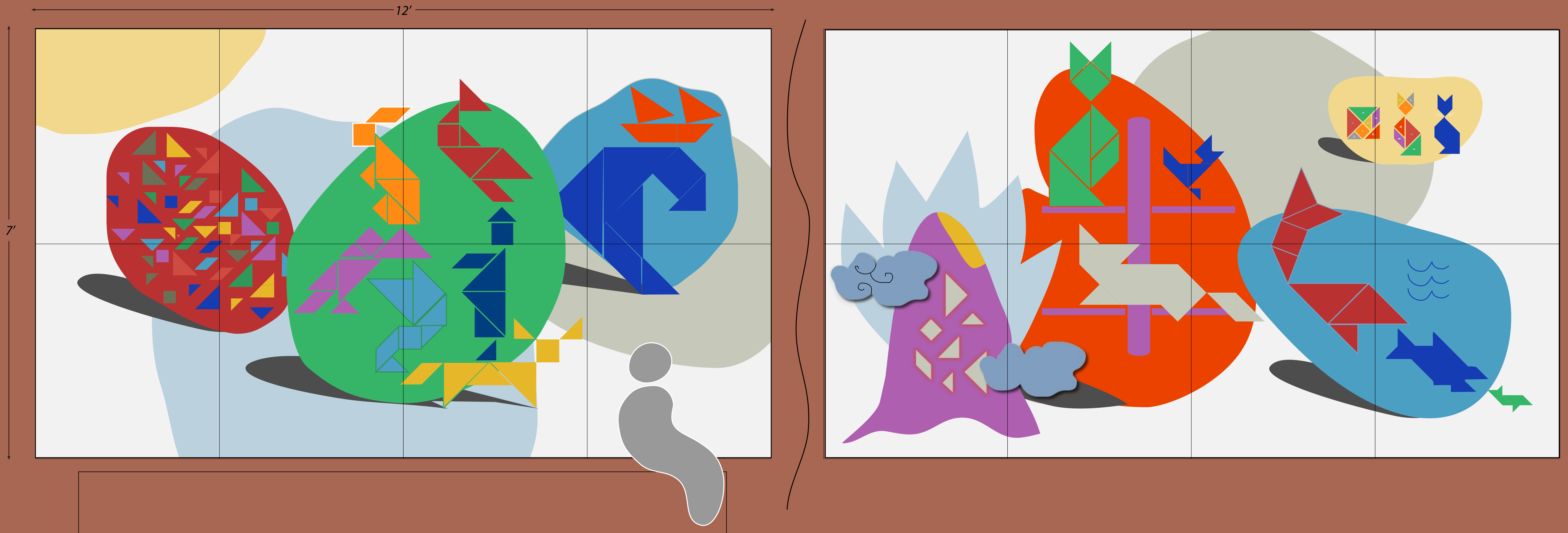


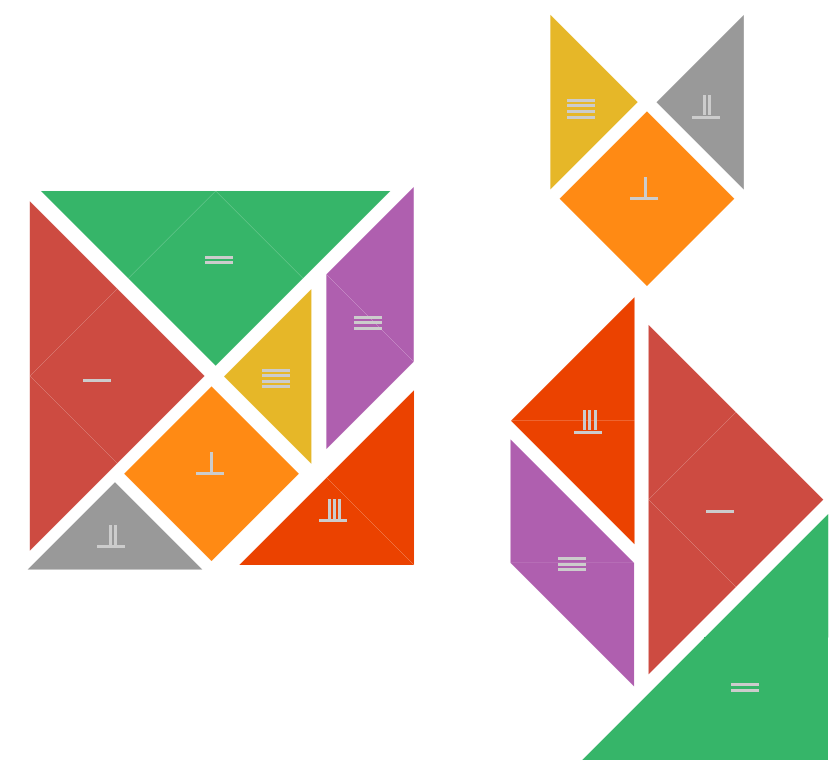
# SEVEN SCENES FROM THE QI QIAO BAN

*Playful interpretation of the Ancient Chinese puzzle*

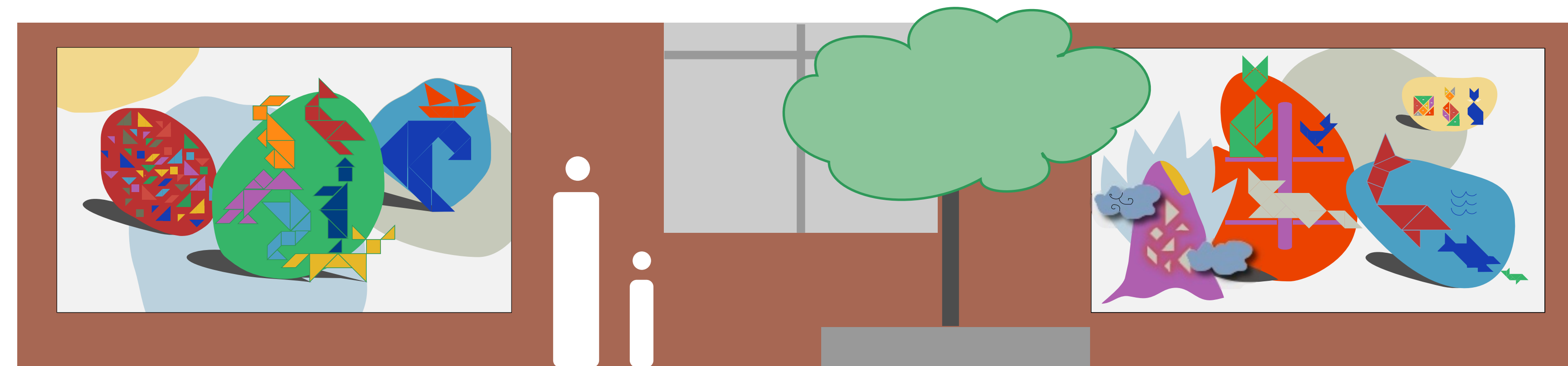


Our concept is inspired by an *Ancient Chinese puzzle --Qi Qiao Ban, literally "seven boards of skill"*. There are seven shapes in the puzzle and seven scenes across the two panels. Each scene is composed of geometric shapes utilising the rules of *Qi Qiao Ban*. Number seven is traditionally associated with togetherness and renewal.

Visual clues and instructions to the game are integrated into the artwork. We designed the mosaics to be engaging. Children will enjoy discovering how the pieces come together to make folk characters. They will learn how to use the shapes to assemble their own designs with the seven shapes of *Qi Qiao Ban*.



The *qi qiao ban*, also known as **tangram** (literally "seven boards of skill") consists of seven flat shapes, called tans, which are put together to form shapes. The objective of the puzzle is to form a specific shape (given only in outline or silhouette) using all seven pieces, which may not overlap.



**COLOR SCHEME:** We will integrate colors of the campus into our color scheme as specified.

**SURFACE AND TEXTURE:** Mosaic tiles as a media provides rich choice of color and texture to enhance our concept.

**SAFETY AND DURABILITY:** We are using the latest structural materials and mosaic production techniques to achieve high standards of durability and weather resistance. Artwork is designed for minimal maintenance requirements and maximum safety standards. Special grout sealant for the surface will be applied to protect the surface.

