

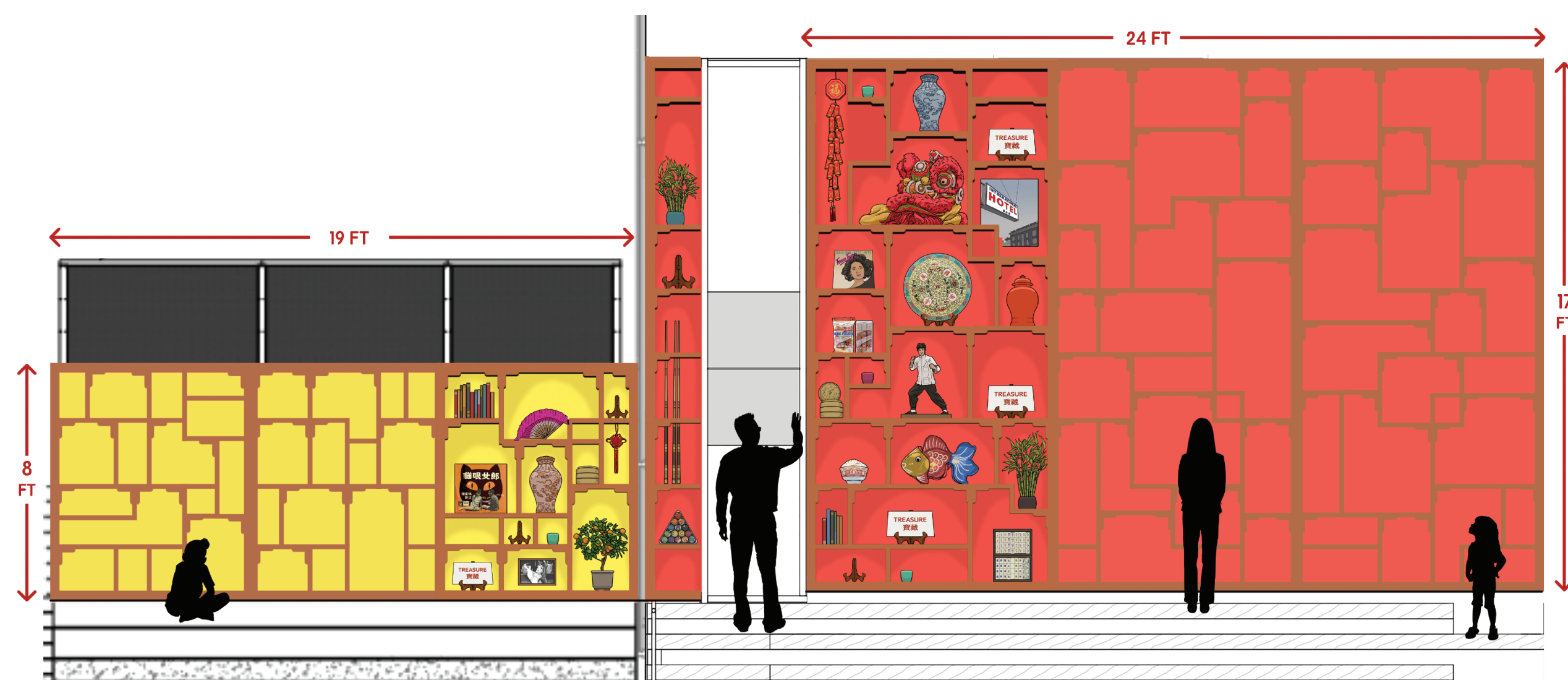
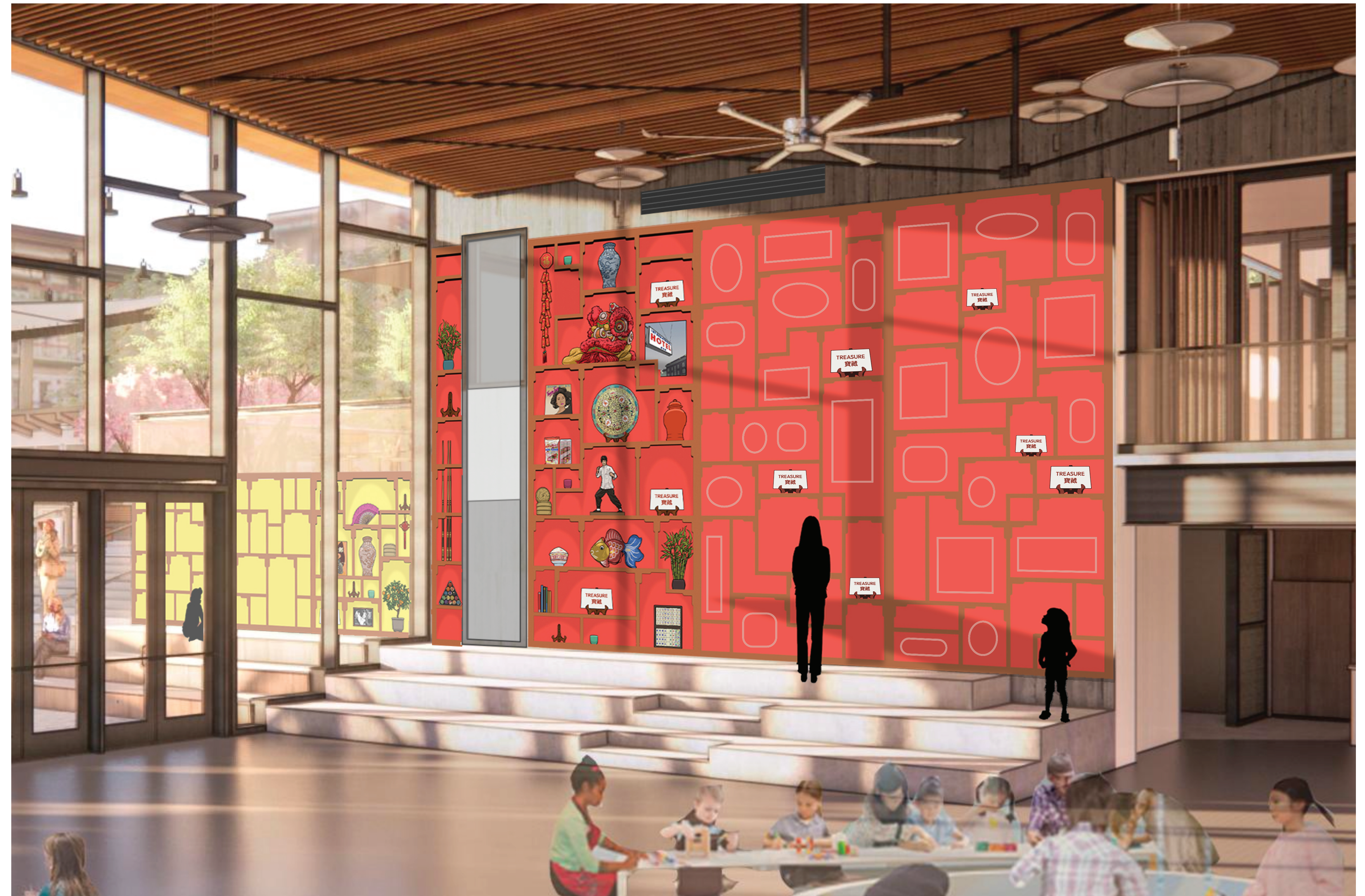
COMMUNITY TREASURES 社區嘅寶藏

Proposal for the Portsmouth Square Clubhouse Art Wall SFAC Public Art Project: Jenifer K Wofford

Chinatown's history, community and values are priceless treasures. "Community Treasures" will showcase the wonderful variety of these riches. Portsmouth Square's importance as the "living room" of the neighborhood, as well as the "jewel box" design of the new park, calls for artwork that makes people feel at home and feel treasured.

This mural will be a community treasure wall both inside and outside the Portsmouth Square Clubhouse. It references traditional Chinese cabinets, and their place in living rooms both large and small.

It will be grand in scale like the treasure cabinets of San Francisco's Asian Art Museum and Beijing's Imperial City, but will display additional objects that are precious to Chinatown. The history of the neighborhood is not defined by imperial acquisitions, after all: its treasures are more intimate.



Treasures are precious, but not always traditional. While this new wall will certainly include some classically beautiful ancient curios, what will set it apart is the inclusion of objects and images that speak to collective action and community on the ground level for the people that have been gathering here for decades.

The complete inventory of treasures will be co-created with the community in workshops. Two important questions for these workshops are:

- What do you value?
- What objects do you hope will remain precious in the future?



The mural will be digitally illustrated in a clean, simple style, and then printed on ceramic panels for durability and longevity.

The basic "treasure wall" idea is fixed, but certain additions are part of the plan.

Many shelves are still blank, because the objects they contain will be developed later in community workshops.

