

# **SAN FRANCISCO ARTS COMMISSION (SFAC) FY26**

**Required Documents:**

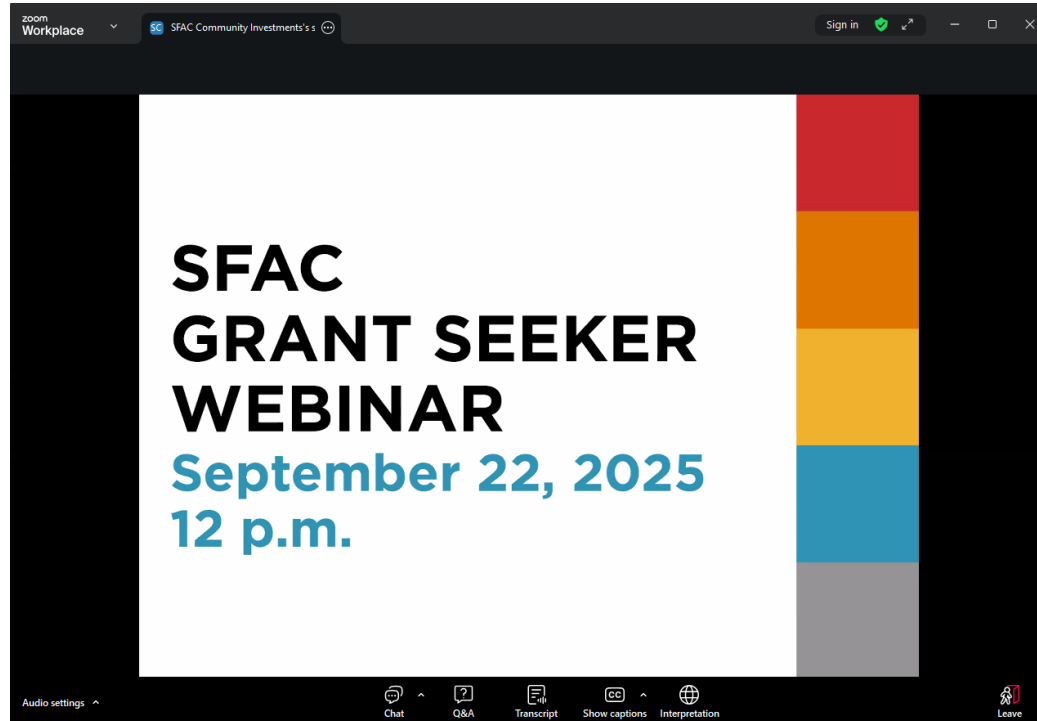
**Not just Work Samples**

## **WEBINAR**

**October 3, 2025**

**12 p.m.**

# TECHNICAL HOUSEKEEPING



Your microphones have been automatically muted, and video for attendees will be turned off for this session.

Access Chat by clicking the "Chat" option.

Please post all questions in the Q&A tool.

Click "Transcript" for a separate window with text, or click "Show Captions" for Zoom's caption tool with English and other languages.

Click on "Interpretation" and select American Sign Language to view a separate window with ASL Interpretation.



San Francisco Recovery Theatre Sherrie Taylor in Tales from the Fentanyl

# HOUSEKEEPING

- This Grant Seeker Webinar is being recorded!
- A PDF to this slide deck and a link to this recording can be found on the SFAC Grant Info Sessions page within 5-7 business days.

[www.sfartscommission.org/content/grant-information-sessions](http://www.sfartscommission.org/content/grant-information-sessions)

- If you need technical assistance, please email [sfac.grants@sfgov.org](mailto:sfac.grants@sfgov.org) or let us know in the Zoom chat. Be sure to share the technical issue and staff will respond shortly to assist.

# LAND ACKNOWLEDGEMENT



*Antone Family (Tohono O'odham),  
2019, Photo by Hulleah  
Tsinhnahjinnie*  
Left to right: Christine [seated],  
Melanie, Michelle and Arianna

The San Francisco Arts Commission acknowledges that we are on the unceded ancestral homeland of the Ramaytush Ohlone who are the original inhabitants of the San Francisco Peninsula. As the indigenous stewards of this land and in accordance with their traditions, the Ramaytush Ohlone have never ceded, lost nor forgotten their responsibilities as the caretakers of this place, as well as for all peoples who reside in their traditional territory. As guests, we recognize that we benefit from living and working on their traditional homeland. We wish to pay our respects by acknowledging the ancestors, elders and relatives of the Ramaytush Community and by affirming their sovereign rights as First Peoples. As a department dedicated to promoting a diverse and equitable Arts and Culture environment in San Francisco, we are committed to supporting the traditional and contemporary evolution of the American Indian community.

# OUR PRESENTERS

## SFAC Community Investments Staff:

- Senior Program Officer Anne Trickey (they/them)
- Senior Program Officer Jonell Molina (he/him)
- Program Officer Jen Atwood (she/her)
- Program Officer Jennifer Chu (she/her)
- Program Associate Kingsley Sun (he/him)
- Program Associate Jax Blaska (they/them)

## ASL Interpreters:

- Aviva and Teresa



2024 Dream Keeper Initiative  
grantee Zaccho Dance Theater.  
Conni McKenzie, Zaccho Dance  
Theater Black Futures Fellow.  
January 2025. Photo by  
LexMexart + Photography.



# AGENDA



2022 Cultural Equity Initiatives, Nā  
Lei Hulu I Ka Wēkiu

- SFAC Overview (10)
- Uploads Overview (20)
  - Selection
  - Technical tips
- Smart Simple Demo (10)
- Grant Seeker Tips (5)
- Q&A (15)



# SFAC OVERVIEW



# ABOUT SFAC



The San Francisco Arts Commission is the City agency that champions the arts as essential to daily life by investing in a vibrant arts community, enlivening the urban environment and shaping innovative cultural policy.

Our programs include:

- Community Investments
- Public Art
- Civic Art Collection
- Civic Design Review
- Art Vendor Program
- SFAC Galleries

New Conservatory Theatre Center -  
The Emperors New Posts photo by  
Lois Tema



# RACIAL EQUITY STATEMENT



SOMArts, Thinking of You

The San Francisco Arts Commission is committed to creating a city where all artists and cultural workers have the freedom, resources and platform to share their stories, art and culture and where race does not predetermine one's success in life. We also acknowledge that we occupy traditional and unceded Ohlone land. Fueled by these beliefs, we commit to addressing the systemic inequities within our agency, the City and County of San Francisco and the broader arts and culture sector. This work requires that we focus on race as we confront inequities of the past, reveal inequities of the present and develop effective strategies to move all of us towards an equitable future.

# COMMUNITY INVESTMENTS PROGRAM



The **Community Investments Program** supports San Francisco artists, arts organizations, and communities with an equity lens through grants, technical assistance and capacity building, economic development, arts education initiatives and community-based Cultural Centers.

CounterPulse - Vera Hannush in Try, Hye!  
Photo by Emil Smeja

# ARTS IMPACT ENDOWMENT FUND

Arts Impact Endowment (AIE) funds are focused on *Keeping Artists in San Francisco*. This theme comes from the [2024-2029 Cultural Services Allocation Plan \(CSAP\)](#). Racial and social justice is the primary lens for all program design.

AIE addresses needs in the arts community by keeping artists and arts workers from being displaced, by funding:

- Their work.
- Their working environments.
- Their connections to the communities that nurture them.
- The organizations and ecosystem that support them

AIE supports **three broad areas of funding channels:**

- 1.Sustaining Ongoing Initiatives = General Support 1
- 2.Resilience & Growth = General Support 2
- 3.New Creative Opportunities = Project Support



Arenas Dance Company  
Raices et resistance  
Photo by Brooke Anderson



# CULTURAL EQUITY ENDOWMENT FUND



## SEC. 68.1. PURPOSES

The Cultural Equity Endowment Fund is established to move San Francisco arts funding toward cultural equity.

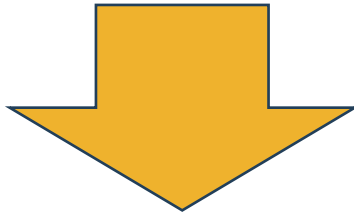
The Arts Commission seeks to fund artists and organizations that foster artistic expression deeply rooted in and reflective of historically marginalized communities, including for example those communities highlighted by the Cultural Equity Endowment Legislation and the Grantmakers in the Arts’ [“Racial Equity in Arts Funding: Statement of Purpose and Recommendations for Action,”](#) and the Cultural Equity Endowment Fund.

Fresh Meat Productions FRESH MEAT  
FESTIVAL Trans And Queer Performers

# ENDOWMENT FUNDS

PRE-FISCAL YEAR 26 GRANTS

ARTS IMPACT  
ENDOWMENT  
FUND



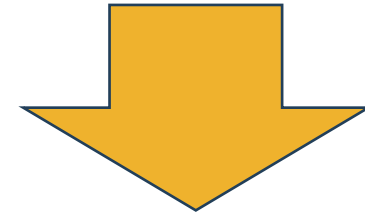
## **Grant Categories**

Arts Impact Endowment (AIE)

## **Who can apply:**

Artists & Organizations

CULTURAL EQUITY  
ENDOWMENT  
FUND



## **Grant Categories**

Artistic Legacy Grant (ALG)  
Cultural Equity Initiatives (CEI)  
San Francisco Artist (SFA)

## **Who can apply:**

ALG and SFA- Artists  
CEI- Organizations



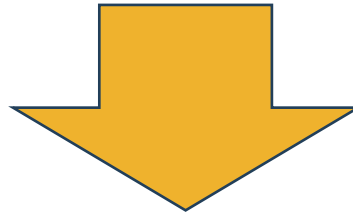
# ENDOWMENT FUNDS

FISCAL YEAR 26 GRANTS

ARTS IMPACT  
ENDOWMENT  
FUND



CULTURAL EQUITY  
ENDOWMENT  
FUND



## Grant Categories

Arts Impact Endowment (AIE)  
Artistic Legacy Grant

## **Who can apply:**

AIE Grant: Artists & Organizations  
ALG Grant: Artists



# **REQUIRED DOCUMENTS OVERVIEW**



# REQUIRED DOCUMENTS - MORE THAN JUST WORK SAMPLES



Final Gallery by Michelle Castillo

Depends on area of funding:

- General Support 1
  - Program testimonials
  - Marketing/planning materials
  - Survey results
- General Support 2
  - Cost estimates
  - Strategic Plan Goals
  - Needs assessment
- Project Support
  - Work Samples
  - Marketing Materials
  - Rough Drafts

# REQUIRED DOCUMENTS - WHAT ARE WORK SAMPLES



InterMusic SF- Lenny Gonzalez and Diana Gameros

Depends on area of funding:

- AIE Individuals and Organizations
- ALG
- Image, Document/Pdf, Audio/Video
- Uploads or links
- Completed or in-progress work
- Demonstrates knowledge and experience
- Relevant to your project

# AIE Individuals: HOW TO CHOOSE A WORK SAMPLE?

Relevant to the selected funding area:

- **General Support 1:** Artists Basic Needs
- **General Support 2:** Equipment Purchase of \$10,000 or more
- **Project Support**
- Demonstrate a Public Benefit
- Start with your project/proposal
- Relationship, progression, or continuation
- Consider:
  - Theme
  - Aesthetics
  - Topics
- Call out your part in collaborations



First Exposures FS Tides Center. Photo by Latiece B.



# AIE Organizations: HOW TO CHOOSE A WORK SAMPLE?

- Samples of organization's past work and ongoing artistic work.
- Mission and Community.
- Cost estimates or planning documentation.
- Demonstrate ability to complete the proposed funding request.
- Demonstrate knowledge of and experience in your organization's creative practice(s)/field.



Alley Mural Project. "Our Matriarchs" by Barbara Mumby-Huerta. Photo by Erin Feller.

# ALG: HOW TO CHOOSE A WORK SAMPLE?



Márcia "Mestra Cigarra" Treidler.  
Photo by Joseph Smooke.

## Artistic Legacy Grant

- Experience in creative practice, artistic accomplishments, and contributions.
- Samples of past work.
- Demonstrate 25 consecutive years or more years of artistic practice.
- Cost estimates or planning documentation.
- Examples of the artist's ability to complete the proposed project, engagement/connection with one or more of the communities identified in the Cultural Equity Endowment legislation.
- May include letters of support.

# SMARTSIMPLE GRANT PORTAL INFORMATION



Valerie Luu Map Making. Photo by Eric Lam

- Total uploads and links = Up to (five) 5
- Any combination of Images, Documents/PDF, or Audio/Video
- 10-25 minutes of content depending on category
- Best practice; 1 minute per 100 words

# IMAGES



Emmanuel Photo 101 by Emmanuel David Blackwell III

Still practices: Craft, Design, Visual Art



# DOCUMENTS or PDFs

INT. MATT'S APARTMENT - NIGHT

Matt and Cody are deep in debate. Colin covers his ears.

MATT

If gaycism doesn't really exist,  
then why is "No Blacks, No Asians"  
still a thing?

CODY

What if they, or I, just prefer--

MATT

A whole race of people?

(beat)

How is writing off a whole race of  
people not racist?

CODY

Listen, I respect your opinion. I  
just don't see it that way.  
Everyone's different.

MATT

(beat)

You ever hook up with a white guy,  
and everything about them, their  
interests, it's all... Asian?

(off Cody's silence)

And they just don't see you as a  
person... As an individual.

(beat)

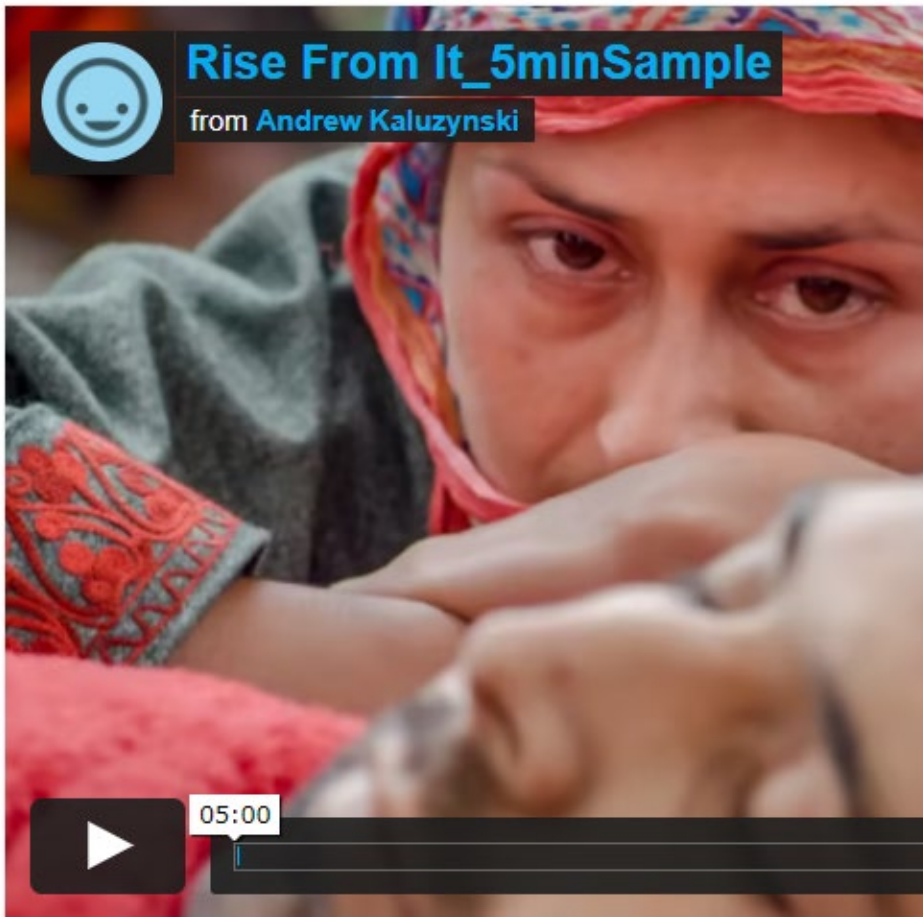
That. That's why I don't fuck with  
white boys anymore. And *that's* why  
an All-Asian drag family.

## Documents:

- comics
- plans
- scores
- scripts
- websites
- writing
- cost estimates
- planning materials



# AUDIO/VIDEO



Dynamic practices:

- dance
- film
- media
- performance

Rise From It by Tara Dorabji

# REQUIRED DOCUMENT UPLOAD

## Required Documents Uploads

Label documents numerically, For example: Document 1 - Work Sample; Document 2 - Audience Data, etc.

### TECHNICAL NOTES

The total number of uploaded or linked documents cannot exceed five (5).

The total size of all your work sample uploads cannot exceed 35 MB.

Large files should be linked not uploaded. Large files are difficult to upload and download, provide links to larger files.

To avoid exceeding this size limit, we recommend linking to work hosted online whenever possible.

The total size of your application uploads including ALL UPLOADS cannot exceed 50 MB.

ACCEPTED FILE TYPES: pdf, doc, docx, mpg, mp3, mp4, vma, divx, mov, avi, wmv, wma, jpg, png.

Applicants cannot delete or change uploads. If you need to delete an upload, please contact [sfac.grants@sfgov.org](mailto:sfac.grants@sfgov.org) for assistance. Requests must be made before the application deadline.

 Drop files here or [browse files](#)

Maximum file size: 50 MB | Maximum number of files: 5 | Allowed file types: MPG, MP3, MP4, VMA, DIVX, MOV, AVI, WMV, WMA, PDF, DOC, DOCX, JPG, PNG

[< BACK](#)

[NEXT >](#)

Save Draft

# REQUIRED DOCUMENT LINKS

## Required Documents Links

Provide any links below.

Label links numerically, For example: Link 1 - Work Sample + LINK ; Link 2 - Audience Data + LINK, etc.

Click enter to add a new line.

Link 1: Work Sample <https://www.sfartscommission.org>

Link 2: <https://www.sfartscommission.org/sites/default/files/pdf/Final%20Craft%20to%20sell.pdf>

< BACK

Save Draft

REQUIRED DOCUMENT UPLOAD

NEXT >

# TECHNICAL INFORMATION: FILE TYPE

**Applicant Tab:** PDF, DOC, DOCX, JPG, PNG

**Required documents tab:** PDF, DOC, DOCX, MPG, MP3, MP4, VMA, DIVX, MOV, AVI, WMV, WMA, JPG, PNG

- **Images:** .jpg .png
- **Documents:** .doc .docx .pdf
- **Audio/Video:** .mpg .mp3 .mp4 .vma .divx .mov .avi .wmv .wma

# ONLINE HOSTING: STATIC LINKS

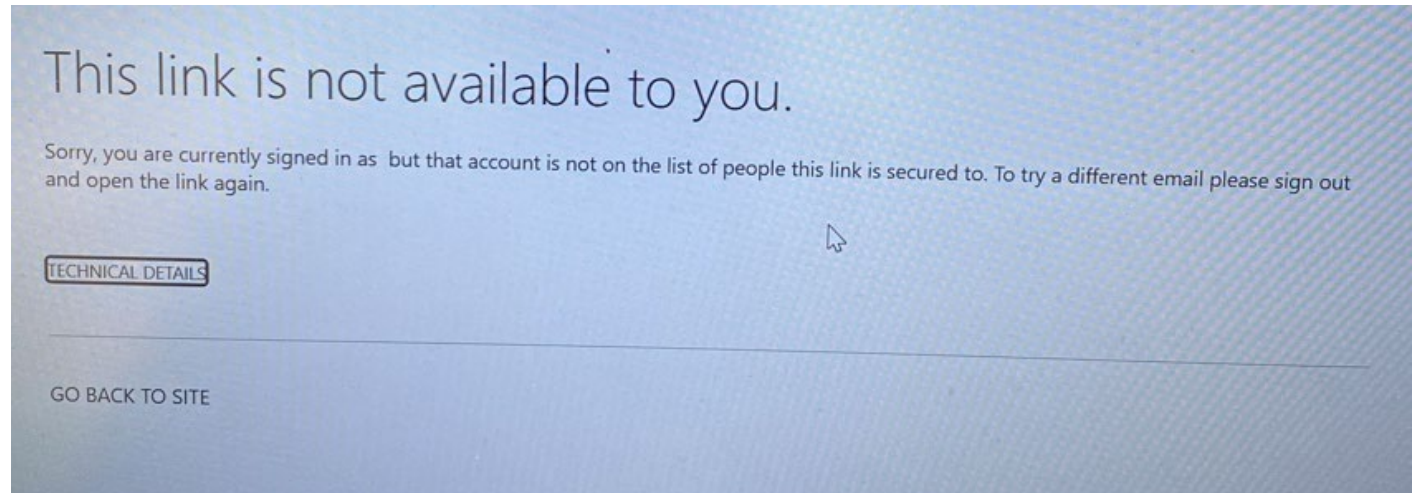


This item might not exist or is no longer available

This item might have been deleted, expired, or you might not have permission to view it. Contact the owner of this item for more information.

Retry

- Static links
- Do not change privacy status
- Carefully consider passwords
- Direct panelists to specific content
- Include viewing cue





# ONLINE HOSTING: OPTIONS

## Images:

- Flickr
- Facebook
- Instagram
- Google Photos
- Twitter
- Photobucket
- Imgur

## Audio/Video

- YouTube
- Vimeo
- Instagram
- TikTok
- Facebook
- SoundCloud
- BandCamp
- Twitch

## Pages

- Personal & Professional websites or blogs
- News outlets
- Google Drive
- Dropbox



# **SMARTSIMPLE GRANT PORTAL DEMONSTRATION**





# **GRANT SEEKER TIPS**

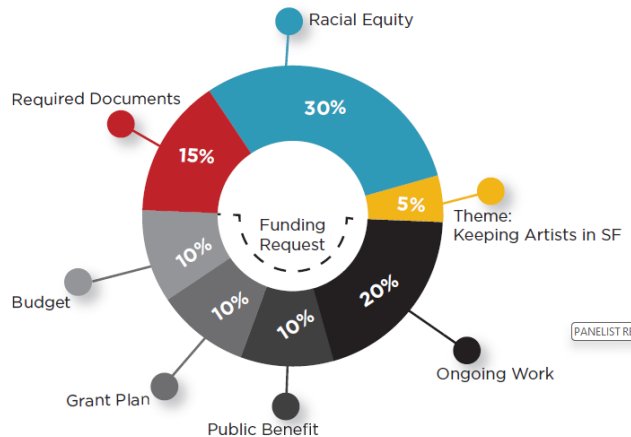


# PANELIST REVIEW

## Arts Impact Endowment (AIE) – For Artists and Organizations

Funding Channel: **General Support 1: Ongoing Work**

- **Artists:** Support for basic needs or ongoing artistic work
- **Organizations:** General operating support



- AIE (Individuals and Organizations):
  - General Support 1 & 2
    - 15 points, 15% overall
  - Project Support
    - 20 points, 20% overall
- ALG: 25 points, 25% overall

## \*Reminders\*

- Panelists review time varies (15 points: 15 minutes, 20 points: 20 minutes, etc.)
- Make it Accessible (include password, if applicable)

# GRANTSEEKER TIPS



Violeta Luna Bodies in Transit by  
Paula V Luna Torres with Galeria  
Studio. Photo Tim Keefe

- Read the guidelines thoroughly and refer to the instructions.
- Schedule a 15-minute session with the category specific Program Officer.
- Gather work samples, review file size and test links in advance.
- Draft responses in another document, then cut and paste answers into the online form. Pay attention to word count.
- Write with enthusiasm and tell a compelling story.
- Be consistent, be specific, consider having a friend review before submitting.



# Q & A



Anthony Jimenez. Photo by Jeanelle Bantigue.

# Thank you!

Grant Category	Program Officer	Email
AIE: Individuals	Jen Atwood	<a href="mailto:jennifer.atwood@sfgov.org">jennifer.atwood@sfgov.org</a>
AIE: Organizations Artistic Legacy Grant	Jennifer Chu	<a href="mailto:jennifer.chu@sfgov.org">jennifer.chu@sfgov.org</a>